

**DIRECT SUPPORT AND GENERAL SUPPORT MAINTENANCE  
REPAIR PARTS AND SPECIAL TOOLS LIST  
(INCLUDING DEPOT MAINTENANCE REPAIR PARTS AND SPECIAL TOOLS)  
FOR  
POWER SUPPLY, REGULATOR-BATTERY PP-7724/G  
(NSN 6130-01-120-2969)**

TECHNICAL MANUAL  
 No. 11-6130-396-34P  
 TECHNICAL MANUAL  
 EE010-BG-PLL-010/E154 RBC  
 TECHNICAL ORDER  
 TO 35C1-2-857-14

DEPARTMENTS OF THE ARMY  
 THE NAVY, AND THE AIR FORCE

WASHINGTON, DC, 6 September 1985

**DIRECT SUPPORT AND GENERAL SUPPORT MAINTENANCE  
 REPAIR PARTS AND SPECIAL TOOLS LIST  
 (INCLUDING DEPOT MAINTENANCE REPAIR PARTS AND SPECIAL TOOLS)  
 FOR  
 POWER SUPPLY, REGULATOR-BATTERY PP-7724/G  
 (NSN 6130-01-120-2969)  
 Current as of 13 March 1985**

**REPORTING ERRORS AND RECOMMENDING IMPROVEMENTS**

You can help improve this manual. If you find any mistakes or if you know of a way to improve the procedures, please let us know. Mail your letter, DA Form 2028 (Recommended Changes to Publications and Blank Forms), or DA Form 2028-2 located in back of this manual direct to: Commander, US Army Communications-Electronics Command and Fort Monmouth, ATTN: AMSEL-ME-MP, Fort Monmouth, NJ 07703-5007.

For Navy, mail comments to the Commander, Naval Electronics Systems Command, ATTN: ELEX 8122, Washington, DC 20360.

For Air Force, submit AFTO Form 22 (Technical Order System Publication Improvement Report and Reply) in accordance with paragraph 6-5, Section VI, T.O. 00-5-1. Forward direct to prime ALC/MST.

In either case, a reply will be furnished direct to you.

**Table of Contents**

		Page	Illus Figure
SECTION	I.	Introduction .....	1
	II.	Repair Parts List .....	1-1
GROUP		0104 DC Regulator/battery charger PP-77241G .....	1-1 1
		Capacitor panel assembly, SM-D-836500-2 .....	2-1 2
		Fan assembly, SM-D-836472 .....	3-1 3
		Panel assembly, output, SM-C-836454 .....	4-1 4
		Over-voltage assembly, SM-C-836498 .....	5-1 5
		Timer assembly, SM-C-817700 .....	6-1 6
		Handle assembly, SM-C-836531 .....	7-1 7
		SCR/Diode heat sink assembly, SM-D-836475 .....	8-1 8
		Capacitor assembly, SM-C-836477-2 .....	9-1 9
		Fuse assembly, SM-C-817701 .....	10-1 10
		Harness assembly, SM-D-817714 .....	11-1 11
		Harness assembly, SM-D-817725 .....	12-1 12
		010401 Circuit cards AR1, AR2, AR3	
		Circuit card assembly AR3, SM-C-836468 .....	13-1 13
		Circuit card assembly AR2, SM-D-817703 .....	14-1 14
		Circuit card assembly AR1, SM-D-817702 .....	15-1 15
SECTION	III.	Special Tools List (Not applicable)	
	IV.	National Stock Number and Part Number Index .....	I-1

## SECTION I INTRODUCTION

---

### 1. Scope

This manual lists and authorizes spares and repair parts; special tools; special test, measurement, and diagnostic equipment C(MDE); and other special support equipment required for performance of direct support, and general support maintenance of the PP-7724/G. It authorizes the requisitioning, issue, and disposition of spares, repair parts and special tools as indicated by the source, maintenance and recoverability (SMR) codes.

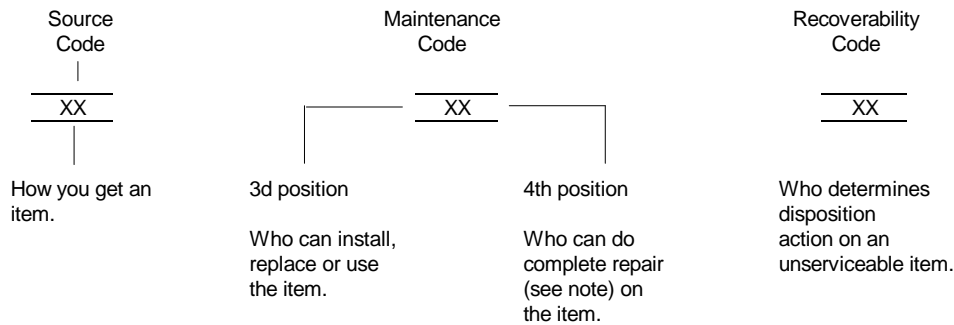
### 2. General

This Repair Parts and Special Tools List is divided into the following sections:

- a. *Section II. Repair Parts List.* A list of spares and repair parts authorized by this RPSTL for use in the performance of maintenance. The list also includes parts which must be removed for replacement of the authorized parts. Parts lists are composed of functional groups in ascending numeric sequence, with the parts in each group listed in ascending item number sequence. Figure numbers are listed directly beneath the group header.
- b. *Section III. Special Tools List.* Not applicable.
- c. *Section IV. National Stock Number and Part Number Index.* A list, in National item identification number (NIIN) sequence, of all National stock numbered items appearing in the listing, followed by a list in alphameric sequence of all part numbers appearing in the listings. National stock numbers and part numbers are cross-referenced to each illustration figure and item number appearance.

### 3. Explanation of Columns (Section II and III)

- a. *Item No. (Column (1)).* Indicates the number used to identify items called out in the illustration.
- b. *SMR Code (Column (2)).* The source, maintenance, and recoverability (SMR) code is a five-position code containing supply/requisitioning information, maintenance category authorization criteria, and disposition instruction, as shown in the following breakout:



<i>Code</i>	<i>Explanation</i>
PA PB PC PD PE PF PG	<p>Stocked items; use the applicable NSN to request/requisition items with these source codes. They are authorized to the category indicated by the code entered in the third position of the SMR code.</p> <p style="text-align: center;"><b>NOTE</b></p> <p style="text-align: center;">Items coded PC are subject to deterioration.</p>

KD KF KB	<p>Items with these codes are not to be requested/requisitioned individually. They are part of a kit which is authorized to the maintenance category indicated in the third position of the SMR code. The complete kit must be requisitioned and applied.</p>
----------------	---

MO-Made at org/AVUM category MF-Made at DS/AVUM category MH-Made at GS category ML-Made at Specialized Repair Activity (SRA) MD-Made Depot	<p>Items with these codes are not to be requested/requisitioned individually. They must be made from bulk material which is identified by the part number in the description and usable on code (UOC) column and listed in the Bulk Material group of the repair parts list. If the item is authorized to you by the third position code of the SMR code, but the source code indicates it is made at a higher category, order the item from the higher category of maintenance.</p>
--	--

AO-Assembled by org/AVUM category AF-Assembled by DS/AVIM category AH-Assembled by GS category AL-Assembled by SRA AD-Assembled by Depot	<p>Items with these codes are not to be requested/requisitioned individually. The parts that make up the assembled item must be requisitioned or fabricated and assembled at the category of maintenance indicated by the source code. If the disposition code of the SMR code authorizes you to replace the item, but the source code indicates the item is assembled at a higher category, order the item from the higher category of maintenance.</p>
--	--

<i>Code</i>	<i>Explanation</i>
XA	Do not requisition an "XA" coded item. Order its next higher assembly.
XB	If an "XB" item is not available from salvage, order it using the FSCM and part number given.
XC	Installation drawing, diagram, instruction sheet, field service drawing, that is identified by manufacturers part number.
XD	Item is not stocked. Order an "XD" coded item through normal supply channels using the FSCM and part number given, if no NSN is available.

**NOTE**

Cannibalization or controlled exchange, when authorized, may be used as a source of supply for items with the above source codes, except for those source coded 'XA' or those aircraft support items restricted by requirements of AR 750-1.

- (2) *Maintenance code.* Maintenance codes tell you the category of maintenance authorized to USE and REPAIR support items. The maintenance codes are entered in the third and fourth positions of the SMR code as follows:
- (a) The maintenance code entered in the third position tells you the lowest maintenance category authorized

to remove, replace, and use an item. The maintenance code entered in the third position will indicate authorization to one of the following categories of maintenance.

<i>Code</i>	<i>Application/Explanation</i>
C-Crew or operator maintenance done within organizational or aviation maintenance.	
O-Organizational or aviation unit category can remove, replace, and use the item.	
F-Direct support or aviation intermediate category can remove, replace, and use the item.	
H-General support category can remove, replace, and use the item.	
L-Specialized repair activity can remove, replace, and use the item.	
D-Depot category can remove, replace, and use the item.	

(b) The maintenance code entered in the fourth position tells whether or not the item is to be repaired and identifies the lowest maintenance category with the capability to do complete repair (i.e., perform all authorized repair functions). This position will contain one of the following maintenance codes.

**NOTE**

Some limited repair may be done on the item at a lower category of maintenance, if authorized by the Maintenance Allocation Chart (MAC) and SMR codes.

<i>Code</i>	<i>Application/Explanation</i>
O-Organizational or aviation unit is the lowest category that can do complete repair of the item.	
F-Direct support or aviation intermediate is the lowest category that can do complete repair of the item.	
H-General support is the lowest category that can do complete repair of the item.	
I-Specialized repair activity (designate the specialized repair activity) is the lowest category that can do complete repair of the item.	
D-Depot is the lowest category that can do complete repair of the item.	
Z-Nonreparable. No repair is authorized.	
B-No repair is authorized. (No parts or special tools are authorized for the maintenance of a "B" coded item). However, the item may be reconditioned by adjusting, lubricating, etc., at the user category.	

(3) *Recoverability code.* Recoverability codes are assigned to items to indicate the disposition action on unserviceable items. The recoverability code is entered in the fifth position of the SMR Code as follows:

<i>Recoverability codes</i>	<i>Application/Explanation</i>
Z-Nonreparable Item. When unserviceable, condemn and dispose of the item at the category of maintenance shown in the third position of SMR Code.	
O-Reparable item. When uneconomically repairable, condemn and dispose of the item at organizational or aviation unit category.	
F-Reparable item. When uneconomically repairable, condemn and dispose of the item at direct support or aviation intermediate category.	
H-Reparable item. When uneconomically repairable, condemn and dispose of the item at general support category.	
D-Reparable item. When beyond lower category repair capability, return to depot. Condemnation and disposal of item not authorized below depot category.	
L-Reparable item. Condemnation and disposal not authorized below specialized repair activity (SRA).	
A-Item requires special handling or condemnation procedures because of specific reasons (e.g., precious metal content, high dollar value, critical material, or hazardous material). Refer to appropriate manuals/directives for specific instructions.	

c. *FSCM(Column 3).* The Federal Supply Code for Manufacturer (FSCM) is a 5-digit numeric code which is used to identify the manufacturer, distributor, or Government agency, etc., that supplies the item.

d. *Part Number (Column 4).* Indicates the primary number used by the manufacturer (individual, company, firm, corporation, or Government activity), which controls the design and characteristics of the item by means of its engineering drawings, specifications, standards, and inspection requirements to identify an item or range of items.

**NOTE**

When you use a NSN to requisition an item, the item you receive may have a different part number from the part ordered.

e. *Description and Usable on Code (UOC) (Column 5).* This column includes the following information.

(1) The Federal item name and, when required, a minimum description to identify the item.

(2) The statement "END OF FIGURE" appears just below the last item description in Column (5) for a given figure in both section II and section m.

f. *Qty (Column 6).* Indicates the quantity of the item used in the breakout shown on the illustration figure, which is prepared for a functional group, subfunctional group, or an assembly. A "IV" appearing in this column in

lieu of a quantity indicates that the quantity is variable and the quantity may vary from application to application.

**4. Explanation of Columns (Section IV)**

*a. National Stock Number (NSN) Index.*

(1) *Stock number column.* This column lists the NSN by National item identification number (NIIN) sequence. The NIIN consists of the last nine digits of the NSN. When using this column to locate an item, ignore the first four digits of the NSN. When requisitioning items use the complete NSN (13 digits).

(2) *Fig. column.* This column lists the number of the figure where the item is identified/located. The illustrations are in numerical sequence in sections II and III.

(3) *Item column.* The item number identifies the item associated with the figure listed in the adjacent Fig. column. This item is also identified by the NSN listed on the same line.

*b. Part Number Index.* Part numbers in *this* index are listed by part number in ascending alphameric sequence.

(1) *FSCM column.* This column lists the Federal supply code for manufacturer (FSCM).

(2) *Part number column.* This column indicates the part number assigned to the item.

(3) *Stock number column.* This column lists the National stock number for the associated part number and manufacturer identified in the part number and FSCM columns to the left.

(4) *Fig. column.* This column lists the number of the figure where the item is identified/located in sections II and II.

(5) *Item column.* The item number is that number assigned to the item as it appears in the figure referenced in the adjacent figure number column.

**5. Special Information**

*a. Associated Publications.* The publications listed below pertain to the PP-77241G and its components:

- TM 11-5805-681-12-1, Central Office, Telephone, Automatic AN/TTC-39(V)2, AN/TTC-39(V)3 and AN/TTC-39(V)5
- TM 11-5805-681-12-2, Central Office, Telephone, Automatic AN/TTC-39(V)2, AN/TTC-39(V)3 and AN/TTC-39(V)5
- TM 11-5805-681-12-3, Central Office, Telephone, Automatic AN/TTC-39(V)2, AN/TTC-39(V)3 and AN/TTC-39(V)5
- TM 11-5805-681-12-4, Central Office, Telephone, Automatic AN/TTC-39(V)2, AN/TTC-39(V)3 and AN/TTC-39(V)5
- TM 11-5805-681-12-5, Central Office, Telephone, Automatic AN/TTC-39(V)2, AN/TTC-39(V)3 and AN/TTC-39(V)5
- TM 11-5805-681-12-6, Central Office, Telephone, Automatic AN/TTC-39(V)2, AN/TTC-39(V)3 and AN/TTC-39(V)5
- TM 11-5805-681-12-7, Central Office, Telephone, Automatic AN/TTC-39(V)2, AN/TTC-39(V)3 and AN/TTC-39(V)5
- TM 11-5805-681-12-8, Central Office, Telephone, Automatic AN/TTC-39(V)2, AN/TTC-39(V)3 and AN/TTC-39(V)5
- TM 11-6130-396-20P, Power Supply, Regulator-Battery PP-77241G

*b. National Stock Numbers.* National stock numbers (NSN's) that are missing from P source coded items have been applied for and will be added to this TM by future change/revision when they are entered in the Army Master Data File (AMDF). Until the NSN's are established and published, submit exception requisitions to: Commander, US Army Communications-Electronics Command and Fort Monmouth, ATTN: AMSEL-MM, Fort Monmouth, NJ 07703-5006 for the part required to support your equipment.

**6. How to Locate Repair Parts**

*a. When National stock number or part number is not known.*

(1) *First.* Using the table of contents, determine the assembly group or subassembly group to which the item belongs. This is necessary since figures are prepared for assembly groups and subassembly groups, and listings are divided into the same groups.

(2) *Second.* Find the figure covering the assembly group or subassembly group to which the item belongs.

(3) *Third.* Identify the item on the figure and note the item number.

(4) *Fourth.* Refer to the Repair Parts List for the figure to find the part number for the item number noted on the figure.

(5) *Fifth.* Refer to the Part Number Index to find the NSN, if assigned.

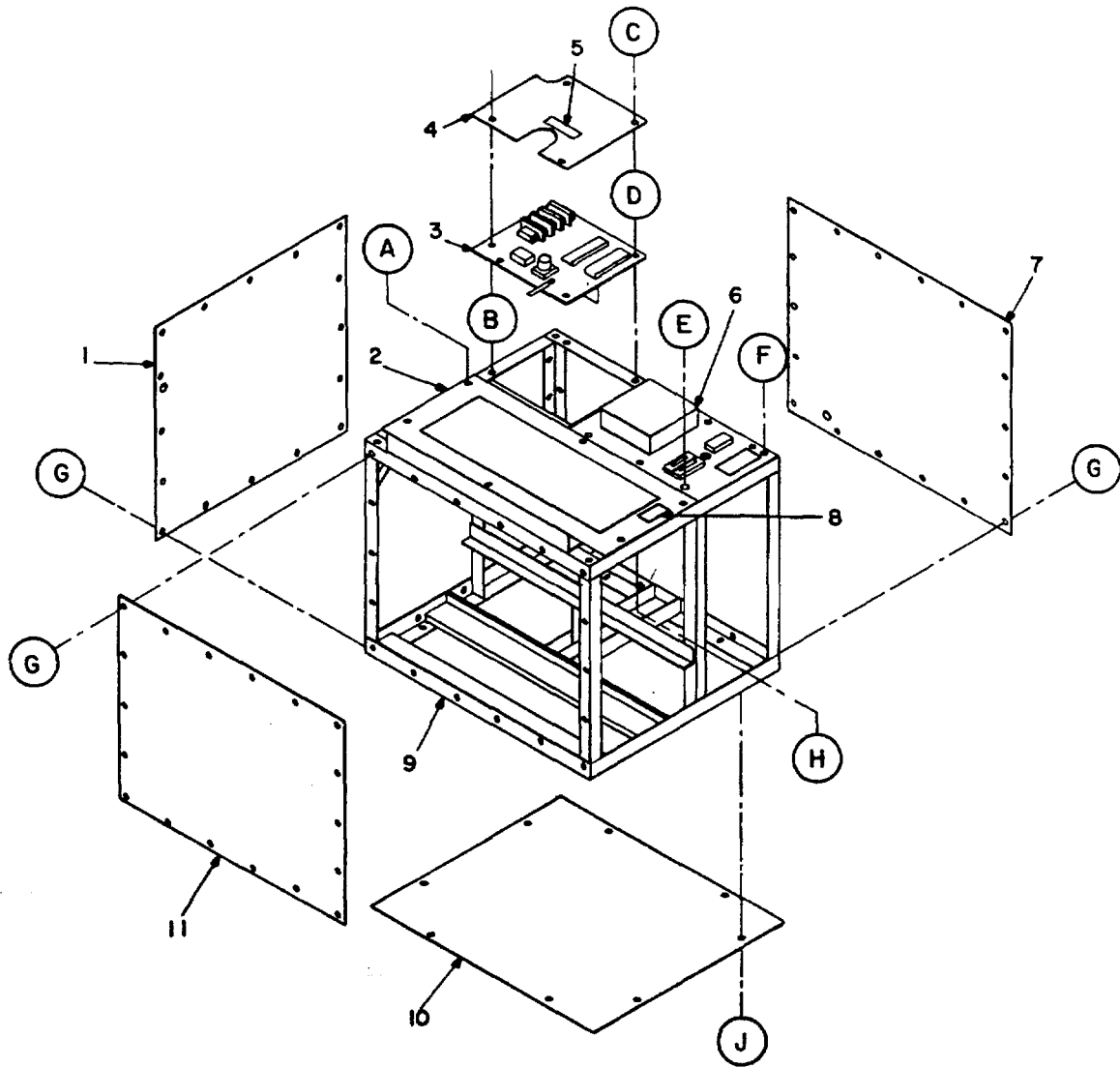
*b. When National stock number or part number is known.*

(1) *First.* Using the index of National stock numbers and part numbers, find the pertinent National stock number or part number. The NSN index is in National item identification number (NIIN) sequence (para 4a(1)). The part numbers in the part number index are listed in ascending alphameric sequence (para 4b). Both indexes cross-reference you to the illustration figure and item number of the item you are looking for.

(2) *Second.* After finding the figure and item number, verify that the item is the one you're looking for, then locate the item number in the repair parts list for the figure.

## **7. Abbreviations**

Not applicable.



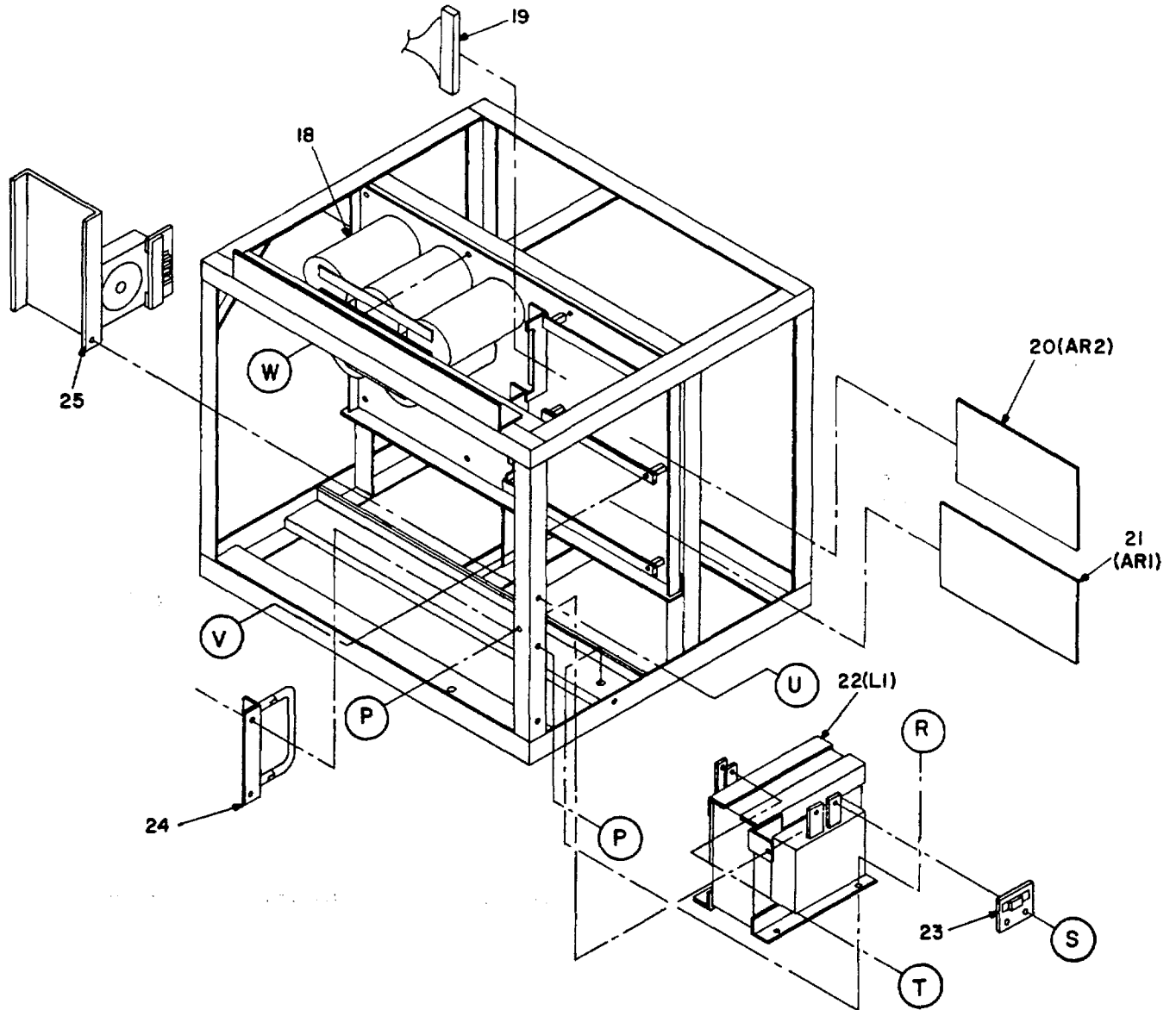
SEE SHEETS 6 THRU 8 FOR ENCIRCLED DETAILS.

EL9CA001

Figure 1. DC Regulator/battery charger PP-7724/G (Sheet 1 of 8).



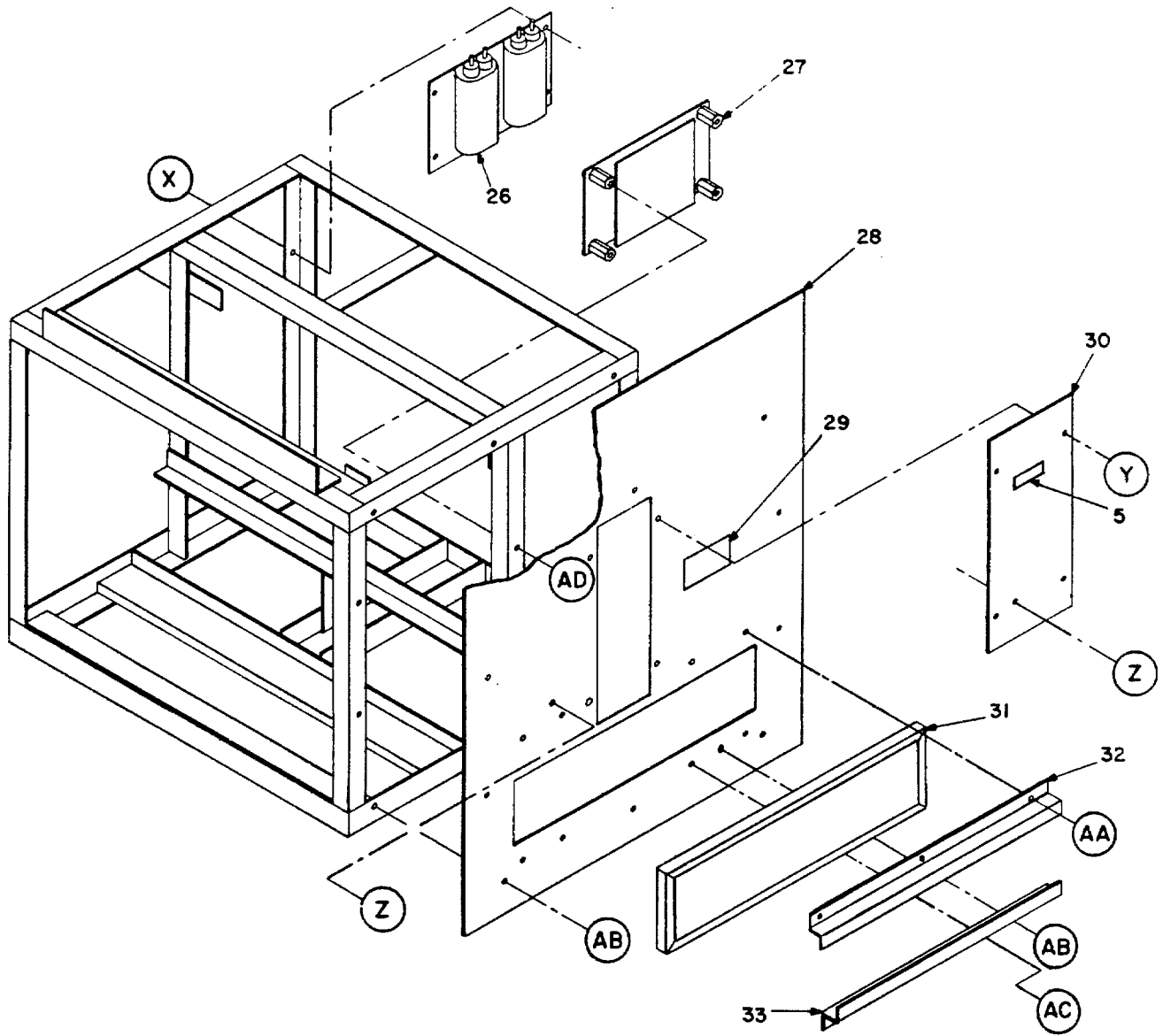




SEE SHEETS 6 THRU 8 FOR ENCIRCLED DETAILS.

EL9CA003

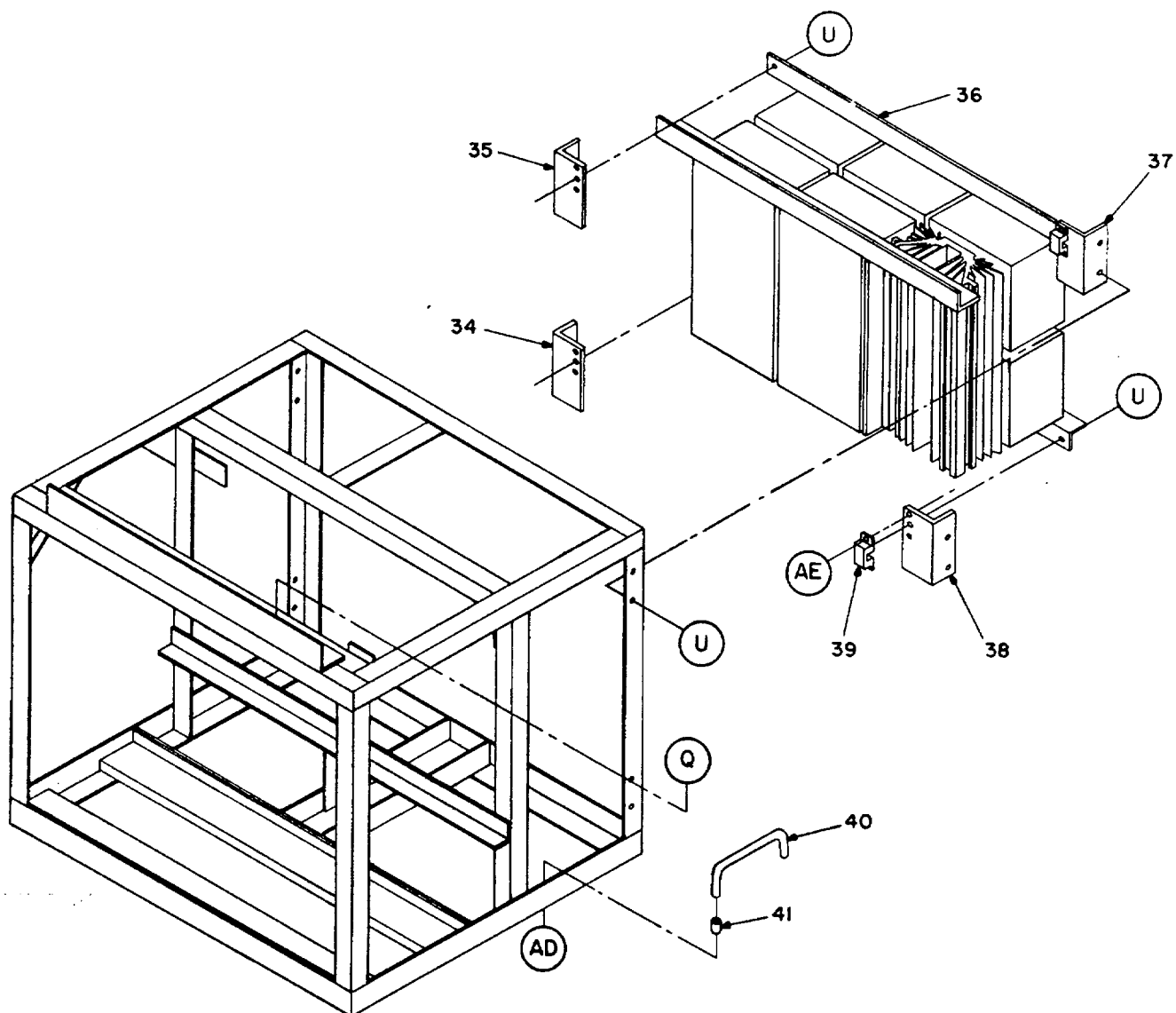
Figure 1. DC Regulator/battery charger PP-7724/G (Sheet 3 of 8).



SEE SHEETS 6 THRU 8 FOR ENCIRCLED DETAILS

EL9CA004

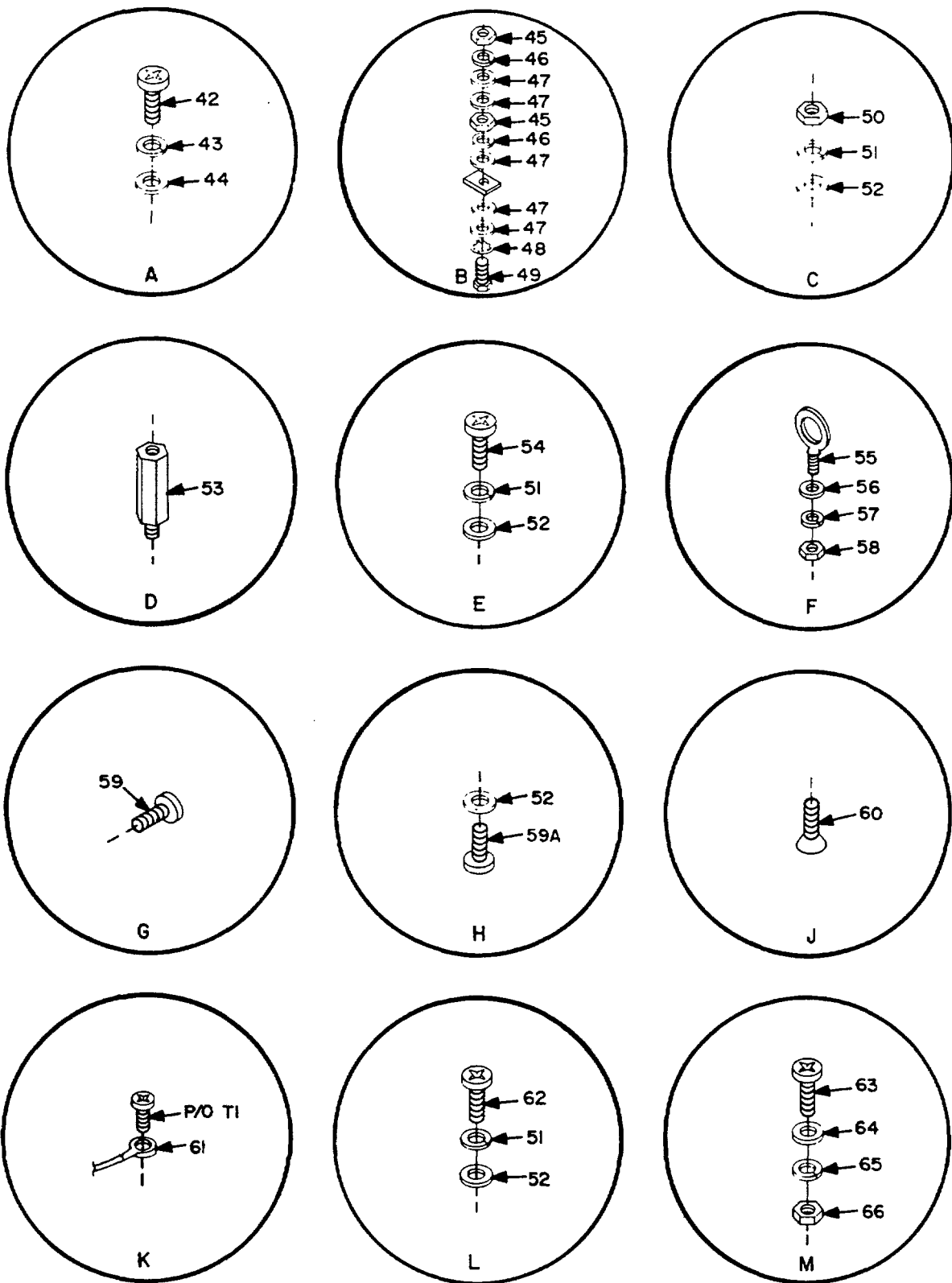
Figure 1. DC Regulator/battery charger PP-7724/G (Sheet 4 of 8).



SEE SHEETS 6 THRU 8 FOR ENCIRCLED DETAILS.

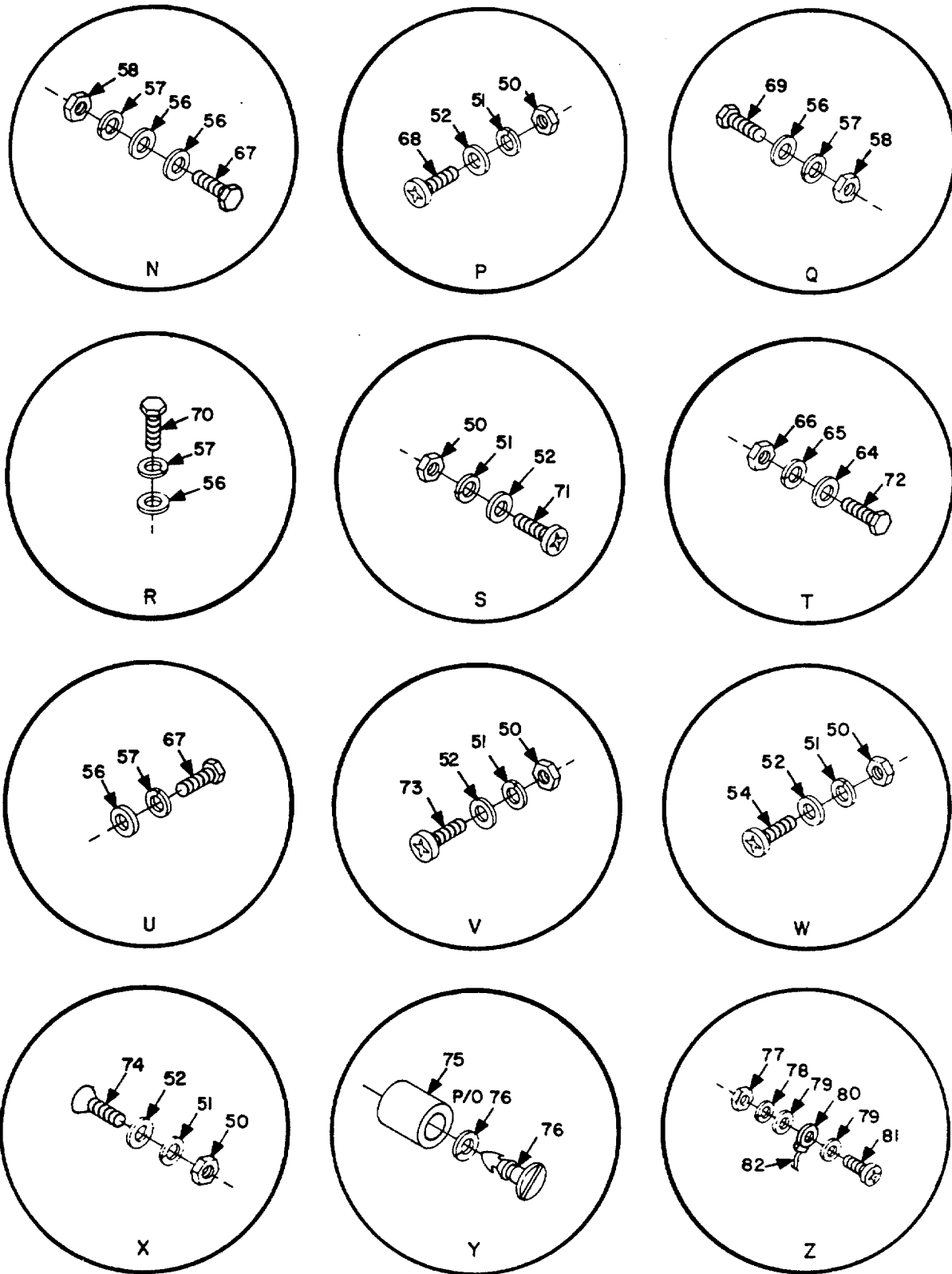
EL9CA005

Figure 1. DC Regulator/battery charger PP-7724/G (Sheet 5 of 8).



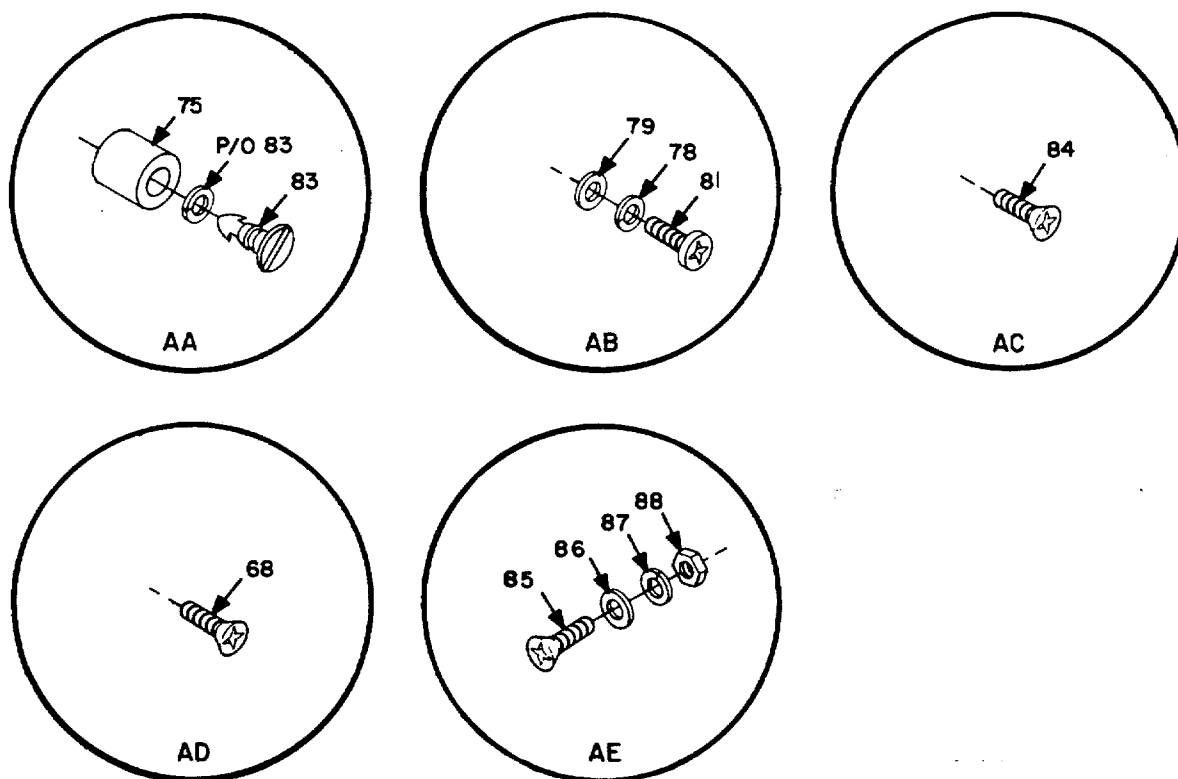
EL9CA006

Figure 1. DC Regulator/battery charger PP-7724/G (Sheet 6 of 8).



EL9CA007

Figure 1. DC Regulator/battery charger PP-7724/G (Sheet 7 of 8).



EL9CA008

Figure 1. DC Regulator/battery charger PP-7724/G (Sheet 8 of 8).

## SECTION II

TM11-6130-396-34P

(1) ITEM NO	(2) SMR CODE	(3) FSCM	(4) PART NUMBER	(5) DESCRIPTION AND USABLE ON CODES(UOC)	(6) QTY
				GROUP 0104 DC REGULATOR/BATTERY CHARGER PP-7724/G	
				FIG 1	
1	XBFZZ	80063	SM-D-836506	PANEL, BACK.....	1
2	XBFZZ	80063	SM-C-817734	COVER, TOP.....	1
3	ADFDD	80063	SM-C-836454	PANEL ASSY, OUTPUT.....	1
4	XBFZZ	80063	SM-B-836478	COVER, ACCESS.....	1
5	XBFZZ	80063	SM-C-811960-2	DECAL, CAUTION.....	1
6	XBODD	80063	SM-D-836472	FAN ASSEMBLY.....	1
7	XBOZZ	80063	SM-D-836504	PANEL, RIGHT SIDE.....	1
8	XBHZZ	80063	SM-C-811945	DECAL, CAUTION.....	1
9	XBFZZ	80063	SM-D-817698	FRAME.....	1
10	XBFZZ	80063	SM-D-836496	PLATE, BOTTOM.....	1
11	XBFZZ	80063	SM-D-836519	PANEL, LEFT SIDE.....	1
12	XBFZZ	80063	SM-B-817716	COVER, TERM BLOCK.....	1
13	XBFZZ	06540	8754-A-1032	SPACER.....	2
14	PAFZZ	12867	T-0394	TRANSFORMER, POWER.....	1
15	XBFZZ	80063	SM-C-817726	BRACKET, RIGHT.....	1
16	XBFZZ	80063	SM-C-817729	ANGLE, TRANSFORMER.....	1
17	XBFZZ	80063	SM-C-817715	BRACKET, XMFR.....	1
18	XBFDD	80063	SM-D-836500-2	CAPACITOR PANEL ASS.....	1
19	XBFFF	80063	SM-D-817725	CABLE HARNESS ASSY.....	1
20	PAODD	80063	SM-D-817703	CIRCUIT CARD ASSEMB.....	1
21	PAODD	80063	SM-D-817702	CIRCUIT CARD ASSEMB.....	1
22	PAFZZ	12867	T-0786	REACTOR.....	1
23	XBFFF	80063	SM-C-817701	FUSE ASSEMBLY.....	1
24	XBFFF	80063	SM-C-836531	HANDLE ASSEMBLY.....	1
25	PAOFF	80063	SM-C-817700	ZENER/TIMER ASSEMBL.....	1
26	XBFFF	80063	SM-C-836477-2	CAPACITOR ASSEMBLY.....	1
27	XBOHH	80063	SM-C-836498	OVER-VOLTAGE ASSY.....	1
28	XBOZZ	80063	SM-D-817720	COVER, FRONT.....	1
29	XBFZZ	80063	SM-D-817305-4	PLATE, IDENT.....	1
30	XBFZZ	80063	SM-C-817699	FRONT COVER DOOR.....	1
31	PAFZZ	59950	06-1302-4488	FILTER ELEMENT, AIR.....	1
32	XBFZZ	80063	SM-B-817718	BRACKET, FILTER.....	1
33	XBFZZ	80063	SM-B-817717	BRACKET, FILTER.....	1
34	XBDZZ	80063	SM-C-817722	SUPPORT BOTTOM RIGH.....	1
35	XBDZZ	80063	SM-C-836528	SUPPORT TOP RIGHT.....	1
36	XBFFF	80063	SM-D-836475	SCR/DIODE HEAT SINK.....	1
37	XBDZZ	80063	SM-C-836529	SUPPORT TOP LEFT.....	1
38	XBDZZ	80063	SM-C-836527	SUPPORT BOTTOM LEFT.....	1
39	PAFZZ	49956	NB103	NUT, PLAIN, PLATE.....	4
40	XBFZZ	06540	12750-B-1032-6	HANDLE.....	1
41	XBFZZ	06540	8756-A-1032	STANDOFF, HEXAGON.....	2
42	PAFZZ	96906	MS35275-228	SCREW, MACHINE.....	6
43	PAFZZ	96906	MS35338-136	WASHER, LOCK.....	6
44	PAFZZ	80063	SM-B-416109-1	WASHER, FLAT.....	6
45	PAFZZ	96906	MS35649-2255	NUT, PLAIN, HEXAGON.....	2
46	PAFZZ	96906	MS35338-101	WASHER, LOCK.....	2

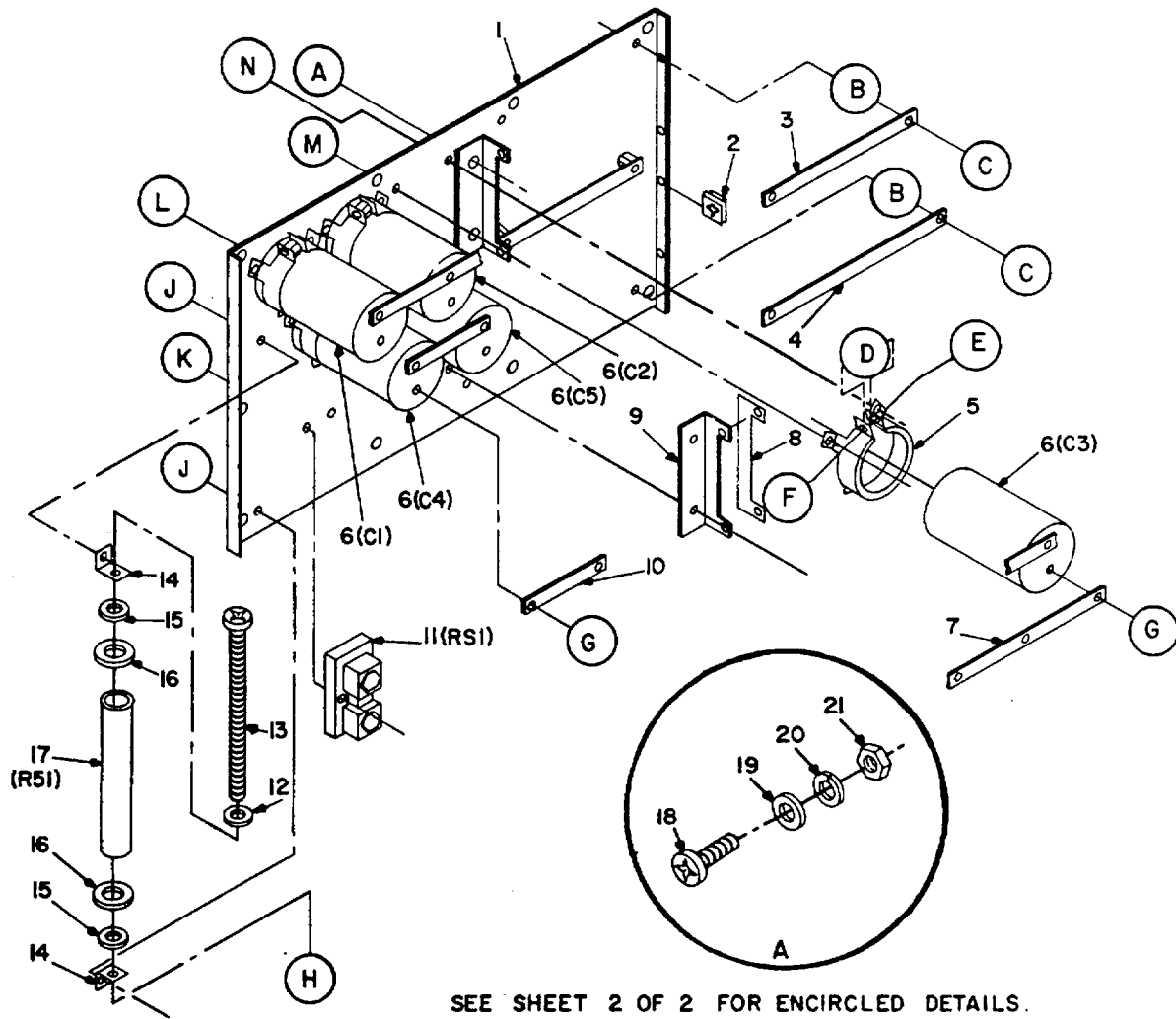


## SECTION II

TM11-6130-396-34P

(1) ITEM NO	(2) SMR CODE	(3) FSCM	(4) PART NUMBER	(5) DESCRIPTION AND USABLE ON CODES(UOC)	(6) QTY
47	PAFZZ	96906	MS15795-910	WASHER, FLAT.....	4
48	PAFZZ	96906	MS35333-107	WASHER, LOCK.....	1
49	PAFZZ	96906	MS35309-310	SCREW, CAP, HEXAGON H.....	1
50	PAFZZ	96906	MS35650-304	NUT, PLAIN, HEXAGON.....	21
51	PAFZZ	96906	MS35338-138	WASHER, LOCK.....	48
52	PAFZZ	06424	0770-9	WASHER, FLAT.....	49
53	XBFZZ	80063	SM-B-836524	POST, ELECTRICAL.....	4
54	PAFZZ	96906	MS35226-263	SCREW, MACHINE.....	6
55	PAFZZ	96906	MS51937-1	BOLT, EYE.....	4
56	PAFZZ	96906	MS15795-810	WASHER, FLAT.....	36
57	PAFZZ	96906	MS35338-139	WASHER, LOCK.....	27
58	PAFZZ	96906	MS35649-2254	NUT, PLAIN, HEXAGON.....	11
59	PAFZZ	96906	MS35191-234	SCREW, MACHINE.....	52
59A	PAFZZ	96906	MS35275-267	SCREW, MACHINE.....	4
60	PAFZZ	96906	MS35190-234	SCREW, MACHINE.....	8
61	XBFFF	80063	SM-D-817714	POWER HARNESS ASSY.....	1
62	PAFZZ	96906	M555275-270	SCREW, MACHINE.....	2
63	PAFZZ	96906	MS35309-306	SCREW, CAP, HEXAGON H.....	4
64	PAFZZ	96906	MS15795-910	WASHER, FLAT.....	10
65	PAFZZ	96906	MS35338-101	WASHER, LOCK.....	5
66	PAFZZ	96906	MS35649-2255	NUT, PLAIN, HEXAGON.....	5
67	PAFZZ	96906	M535307-308	SCREW, CAP, HEXAGON H.....	S
68	PAFZZ	96906	MS35191-273	SCREW, MACHINE.....	14
69	PAFZZ	96906	MS35307-306	SCREW, CAP, HEXAGON H.....	4
70	PAFZZ	96906	MS35307-305	SCREW, CAP, HEXAGON H.....	12
71	PAFZZ	96906	MS35276-265	SCREW, MACHINE.....	2
72	PAFZZ	96906	MS35309-310	SCREW, CAP, HEXAGON H.....	1
73	PAFZZ	96906	MS35275-267	SCREW, MACHINE.....	3
74	PAFZZ	96906	MS35191-272	SCREW, MACHINE.....	4
75	PAFZZ	94222	82-35-307-55	CONNECTOR, PLUG, ELEC.....	7
76	XBFZZ	94222	82-11-280-16W/82 -32-101-20	FASTENER, STUD.....	4
77	PAFZZ	96906	MS35649-284	NUT, PLAIN, HEXAGON.....	2
78	PAFZZ	96906	MS35338-137	WASHER, LOCK.....	2
79	PAFZZ	96906	MS15795-807	WASHER, FLAT.....	4
80	PAFZZ	96906	MS20659-107	TERMINAL, LUG.....	2
81	PAFZZ	96906	MS35275-245	SCREW, MACHINE.....	12
82	XBFZZ	80063	.19DIAX9.00LG	LANYARD, NYLON.....	1
83	PAFZZ	94222	82-11-360-16W/82 -32-101-17	FASTENER, STUD.....	3
84	PAFZZ	96906	MS35191-237	SCREW, MACHINE.....	2
85	PAFZZ	96906	Ms51959-17	SCREW, MACHINE.....	4
86	PAFZZ	96906	MS15795-803	WASHER, FLAT.....	4
87	PAFZZ	96906	MS35338-135	WASHER, LOCK.....	4
88	PAFZZ	96906	MS35649-244	NUT, PLAIN, HEXAGON.....	4

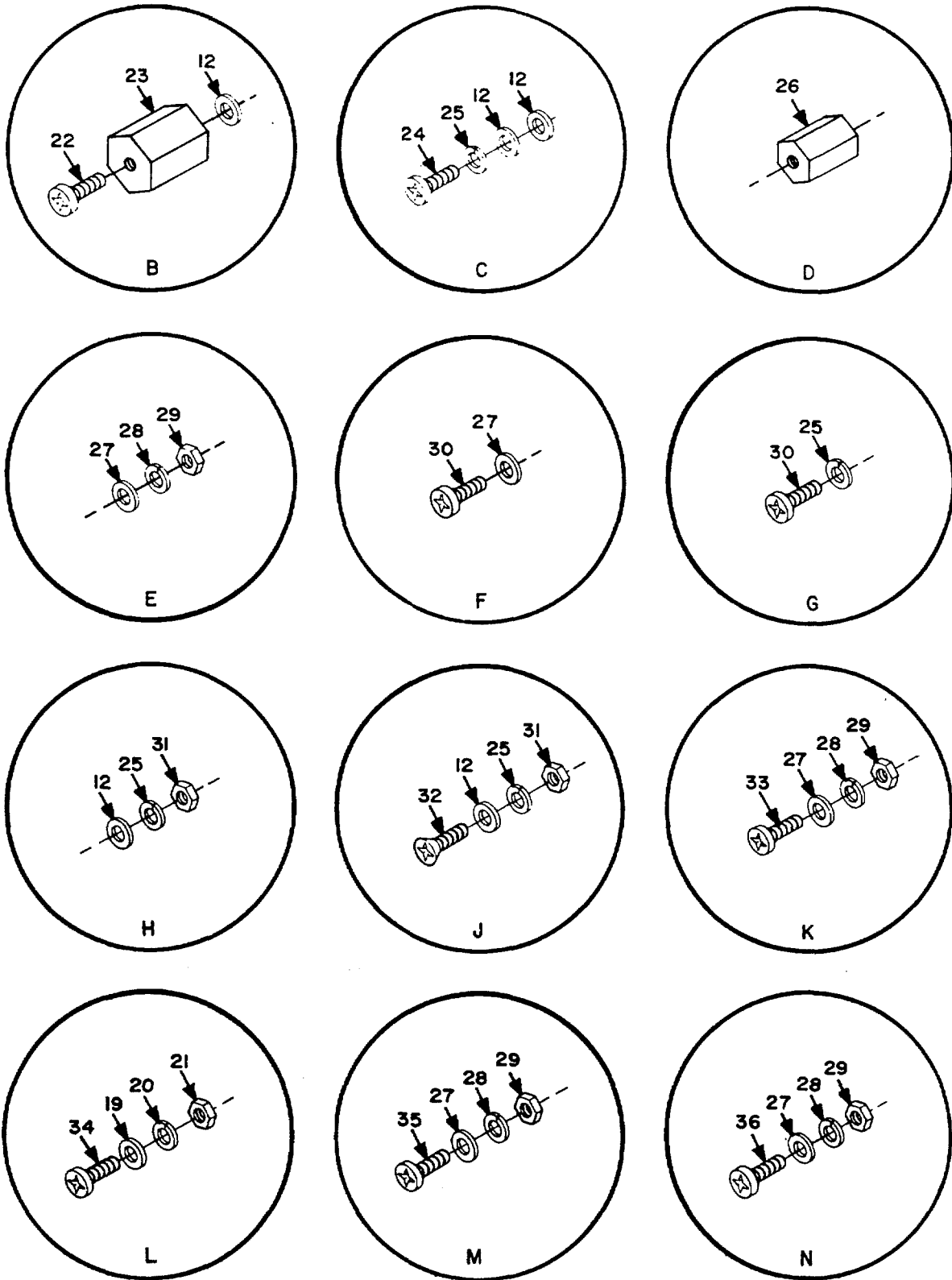
END OF FIGURE



SEE SHEET 2 OF 2 FOR ENCIRCLED DETAILS.

EL9CA009

Figure 2. Capacitor panel assembly, SM-D-836500-2, (Sheet 1 of 2).



EL9CA010

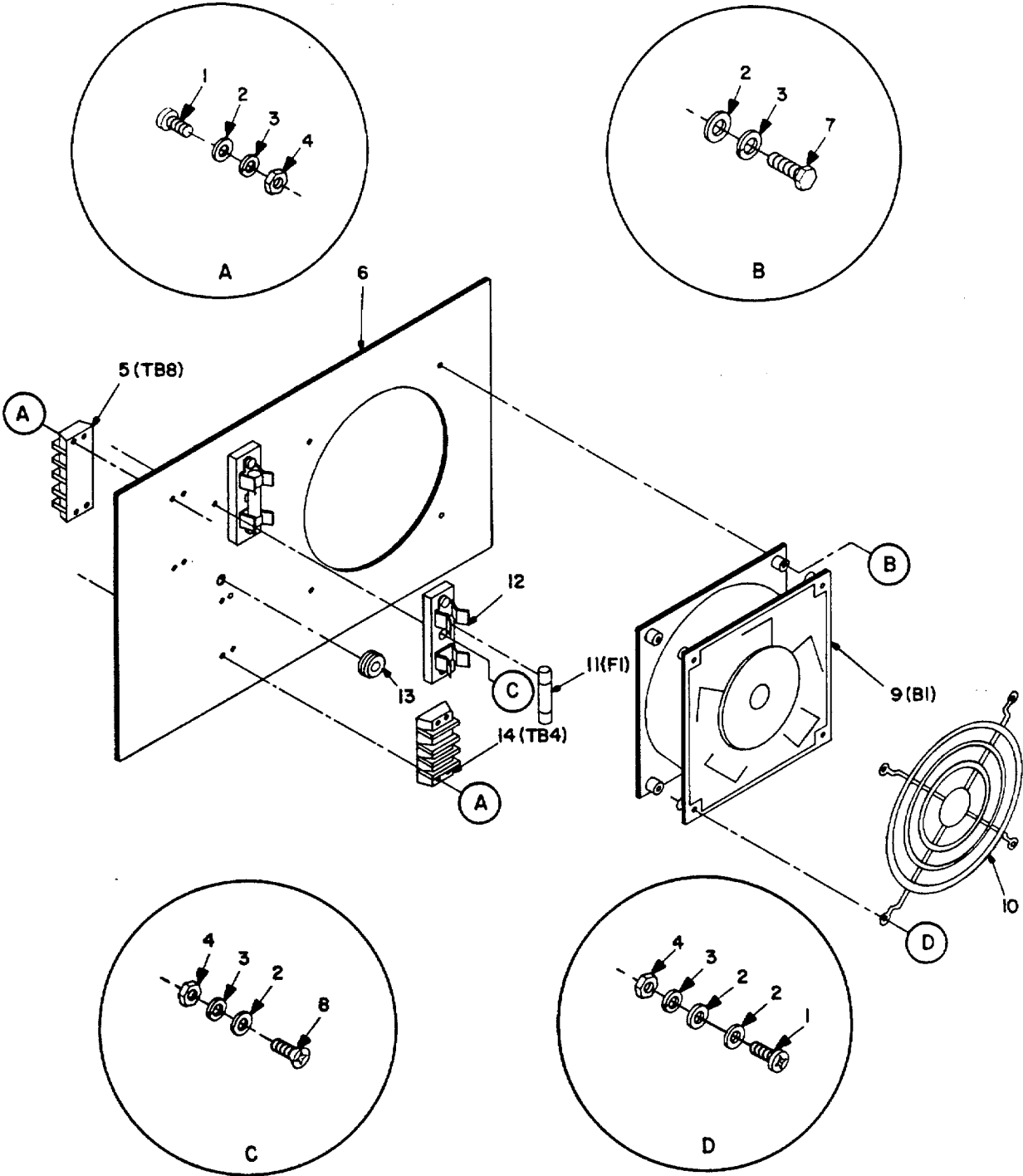
Figure 2. Capacitor panel assembly, SM-D-836500-2 (Sheet 2 of 2).

## SECTION II

TM11-6130-396-34P

(1) ITEM NO	(2) SMR CODE	(3) FSCM	(4) PART NUMBER	(5) DESCRIPTION AND USABLE ON CODES(UOC)	(6) QTY
				GROUP 0104 CAPACITOR PANEL ASSEMBLY, SM-D-836500-2	
				FIG 2	
1	XBDZZ	80063	SM-D-817723	PANEL, CAPACITOR .....	1
2	PADZZ	94222	82-47-112-15	RECEPTACLE, TURNLOCK .....	4
3	XBDZZ	18677	E-301-7IN	GUIDE, CIRCUIT CARD .....	2
4	XBDZZ	18677	E-301-8.5IN	PRINTED CIRCUIT GU .....	1
5	XBDZZ	90201	VR-10	CLAMP, CAPACITOR .....	5
6	PCDZZ	56289	36DX343G040CC2A	CAPACITOR, FIXED, ELE .....	5
7	XBDZZ	80063	SM-B-836543	CAPACITOR BUS .....	2
8	XBDZZ	80063	SM-C-817705	BRACKET, P.C. AMP .....	2
9	XBDZZ	80063	SM-C-817704	BRACKET, P.C. GATING .....	2
10	XBDZZ	80063	SM-B-836474	CAPACITOR BUS .....	2
11	PADZZ	81349	MSB301	SHUNT, INSTRUMENT .....	1
12	PADZZ	96906	MS15795-807	WASHER, FLAT .....	15
13	PADZZ	96906	MS75009-20	SCREW, MACHINE .....	1
14	PADZZ	96906	MS75009-9	RESISTOR, BRACKET .....	2
15	PADZZ	96906	MS75009-6	WASHER, KEY .....	2
16	PADZZ	96906	MS75009-4	INSULATOR, WASHER .....	2
17	PADZZ	81349	RW37V150	RESISTOR, FIXED, WIRE .....	1
18	XBDZZ	96906	MS35191-254	SCREW, MACHINE .....	1
19	PADZZ	96906	MS15795-807	WASHER, FLAT .....	7
20	PADZZ	96906	MS35338-137	WASHER, LOCK .....	4
21	PADZZ	96906	MS35649-282	NUT, PLAIN, HEXAGON .....	4
22	PADZZ	96906	M535191-272	SCREW, MACHINE .....	6
23	XBDZZ	06540	8754-A-1032	SPACER .....	6
24	PADZZ	96906	MS35275-264	SCREW, MACHINE .....	6
25	PADZZ	96906	M535338-138	WASHER, LOCK .....	19
26	XBDZZ	80063	SM-B-836533	SPACER, CAPACITOR .....	5
27	PADZZ	80063	SM-B-416109-1	WASHER, FLAT .....	44
28	PADZZ	96906	M535338-136	WASHER, LOCK .....	22
29	PADZZ	96906	MS35649-264	NUT, PLAIN, HEXAGON .....	22
30	PADZZ	96906	M535275-231	SCREW, MACHINE .....	16
31	PADZZ	96906	MS35649-204	NUT, PLAIN, HEXAGON .....	3
32	PADZZ	96906	MS35191-273	SCREW, MACHINE .....	2
33	PADZZ	96906	MS35275-232	SCREW, MACHINE .....	2
34	PADZZ	96906	MS35275-249	SCREW, MACHINE .....	3
35	PADZZ	96906	MS35191-239	SCREW, MACHINE .....	6
36	PADZZ	96906	MS35275-230	SCREW, MACHINE .....	9

END OF FIGURE



EL9CA011

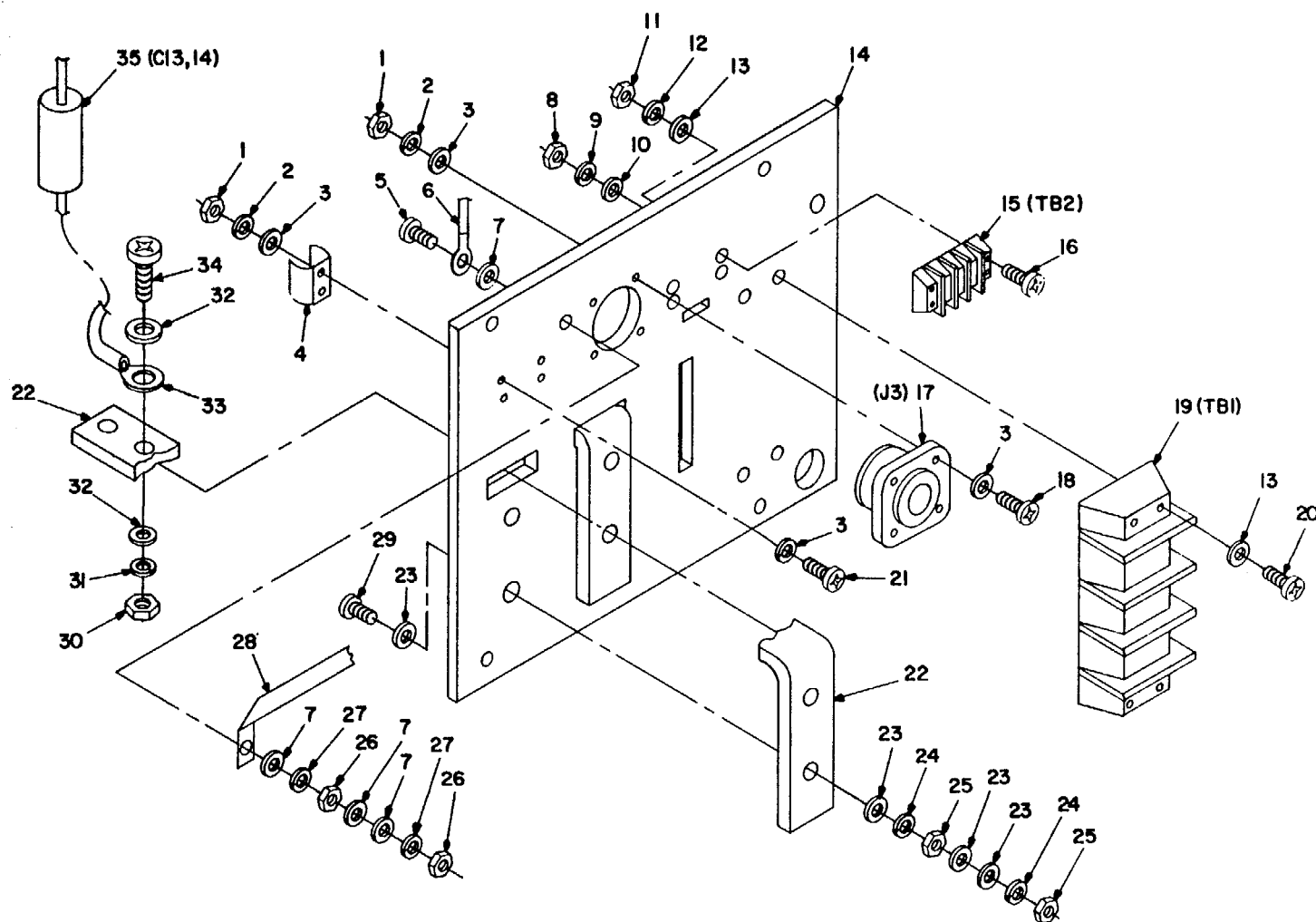
Figure 3. Fan assembly, SM-D-836472.

SECTION II

TM11-6130-396-34P

(1) ITEM NO	(2) SMR CODE	(3) FSCM	(4) PART NUMBER	(5) DESCRIPTION AND USABLE ON CODES(UOC)	(6) QTY
				GROUP 0104 FAN ASSEMBLY,SM-D-836472	
FIG 3					
1	PADZZ	96906	MS35275-231	SCREW, MACHINE.....	12
2	PADZZ	80063	SM-B-416109-1	WASHER, FLAT.....	22
3	PADZZ	96906	MS35338-136	WASHER, LOCK.....	18
4	PADZZ	96906	MS35649	NUT, PLAIN, HEXAGON .....	14
5	PADZZ	80063	SM-B-817738	TERMINAL BOARD.....	1
6	XBDZZ	80063	SM-D-836459	FAN PLATE.....	1
7	PADZZ	80063	SM-A-817739-1	SCREW, CAP, HEXAGON H.....	4
8	PADZZ	96906	MS5959-32	SCREW, MACHINE.....	2
9	PADZZ	28875	BS2107F-30	FAN.....	1
10	XBDZZ	92702	65-175	GUARD, FAN .....	1
11	PADZZ	81349	F03G3R00B	FUSE, CARTRIDGE.....	2
12	PADZZ	81349	FH22AM	FUSEHOLDER, BLOCK .....	2
13	XBDZZ	96906	MS35489	GROMMET, BLANK, NONME .....	1
14	PADZZ	80063	SM-B-817737	TERMINAL BOARD.....	1

END OF FIGURE



EL9CA012

Figure 4. Panel assembly, output, SM-C-836454.

## SECTION II

TM11-6130-396-34P

(1) ITEM NO	(2) SMR CODE	(3) FSCM	(4) PART NUMBER	(5) DESCRIPTION AND USABLE ON CODES(UOC)	(6) QTY
				GROUP 010 PANEL ASSEMBLY, OUTPUT, SM-C-836454	
				FIG 4	
1	PADZZ	96906	M535649-244	NUT, PLAIN, HEXAGON .....	8
2	PADZZ	96906	PAD5338-135	WASHER, LOCK.....	8
3	PADZZ	96906	MS15795-804	WASHER, FLAT.....	16
4	XBDZZ	81349	MS4066/2-228	CLIP, SPRING TENSION .....	2
5	PADZZ	96906	MS35215-59	SCREW, MACHINE.....	1
6	PADZZ	96906	MS25036-101	TERMINAL, LUG .....	2
7	PADZZ	96906	MS15795-908	WASHER, FLAT.....	4
8	PADZZ	96906	MS35649-264	NUT, PLAIN, HEXAGON .....	4
9	PADZZ	96906	MS35338-136	WASHER, LOCK.....	4
10	PADZZ	80063	SM-B-416109-1	WASHER, FLAT.....	4
11	PADZZ	96906	MS35549-284	NUT, PLAIN, HEXAGON .....	4
12	PADZZ	96906	MS35338-137	WASHER, LOCK.....	4
13	PADZZ	96906	MS15795-807	WASHER, FLAT.....	8
14	XBDZZ	80063	SM-D-836458	PANEL .....	1
15	PADZZ	81349	37TB2	TERMINAL BOARD.....	1
16	PADZZ	96906	MS35275-232	SCREW, MACHINE.....	4
17	XBDZZ	96906	MS347OL-1626S	CONNECTOR .....	1
18	PADZZ	96906	MS35275-218	SCREW, MACHINE.....	4
19	XBDZZ	97013	604-3MDG	TERMINAL BLOCK .....	1
20	PADZZ	96906	MS35275-249	SCREW, MACHINE.....	4
21	PADZZ	96906	MS3527S-217	SCREW, MACHINE.....	4
22	XBDZZ	80063	SM-B-836473	BUS BAR.....	2
23	PADZZ	96906	MS15795-914	WASHER, FLAT.....	16
24	PADZZ	96906	MS35338-103	WASHER, LOCK.....	8
25	PADZZ	96906	MS35649-2385	NUT, PLAIN, HEXAGON .....	8
26	PADZZ	96906	MS35650-305	NUT, PLAIN, HEXAGON .....	2
27	PADZZ	96906	MS35338-101	WASHER, LOCK.....	2
28	XBDZZ	80063	SM-B-836491	JUMPER, GROUND.....	1
29	XBDZZ	80063	SM-A-743352-2	SCREW, MACHINE.....	4
30	PADZZ	96906	MS35649-2315	NUT, PLAIN, HEXAGON .....	4
31	PADZZ	96906	MS35338-12	WASHER, LOCK.....	4
32	PADZZ	96906	MS15795-912	WASHER, FLAT.....	8
33	PADZZ	96906	MS25036-101	TERMINAL, LUG .....	2
34	PADZZ	96906	MS35309-308	SCREW, CAP, HEXAGON H.....	4
35	PADZZ	81349	CQR29A1MB125J3P	CAPACITOR, FIXED, PLA.....	2

END OF FIGURE



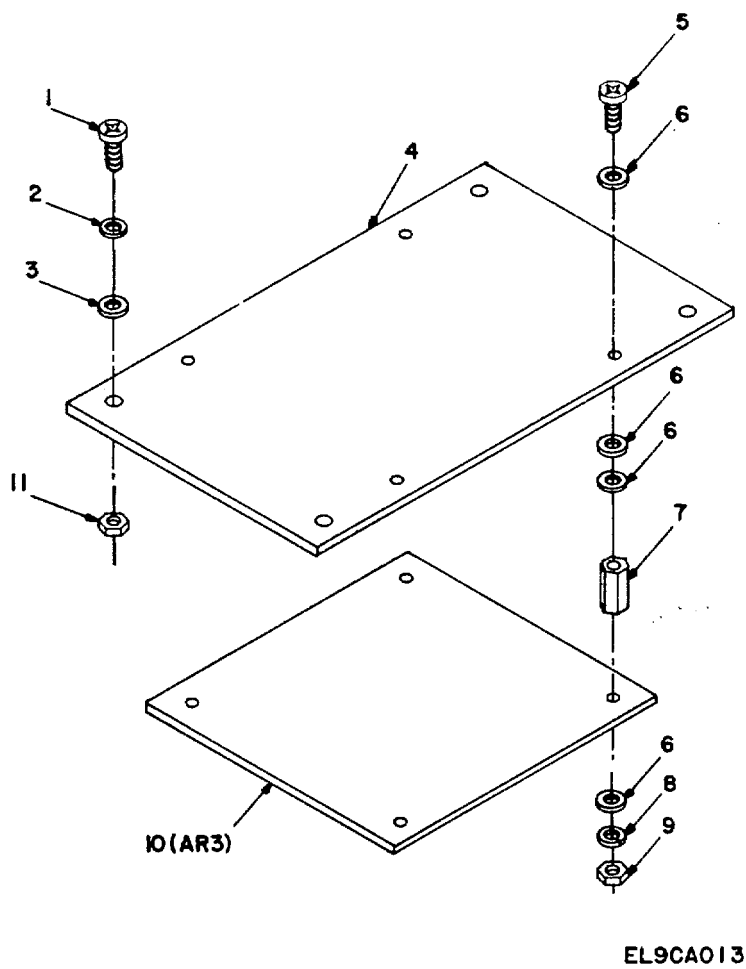


Figure 5. Over-voltage assembly, SM-C-836498.

## SECTION II

TM11-6130-396-34P

(1) ITEM NO	(2) SMR CODE	(3) FSCM	(4) PART NUMBER	(5) DESCRIPTION AND USABLE ON CODES(UOC)	(6) QTY
				GROUP 0104 OVER-VOLTAGE ASSEMBLY, SM-C-836498	
				FIG 5	
1	PAOZZ	96906	MS35275-264	SCREW, MACHINE.....	4
2	PAOZZ	96906	MS35338-138	WASHER, LOCK.....	4
3	PAOZZ	96906	MS15795-807	WASHER, FLAT.....	4
4	XBOZZ	80063	SM-B-836499	MOUNTING BOARD .....	1
5	PAOZZ	96906	MS35275-234	SCREW, MACHINE.....	4
6	PAOZZ	80063	SM-B-416109-1	WASHER, FLAT.....	16
7	PAOZZ	80063	SM-B-836532	SPACER.....	4
8	PAOZZ	96906	MS35338-136	WASHER, LOCK.....	4
9	PAOZZ	96906	MS35649-264	NUT, PLAIN, HEXAGON .....	4
10	PAODD	80063	SM-C-836468	CIRCUIT CARD ASSEMB .....	1
11	PAOZZ	96906	MS35649-204	NUT, PLAIN, HEXAGON .....	4

END OF FIGURE

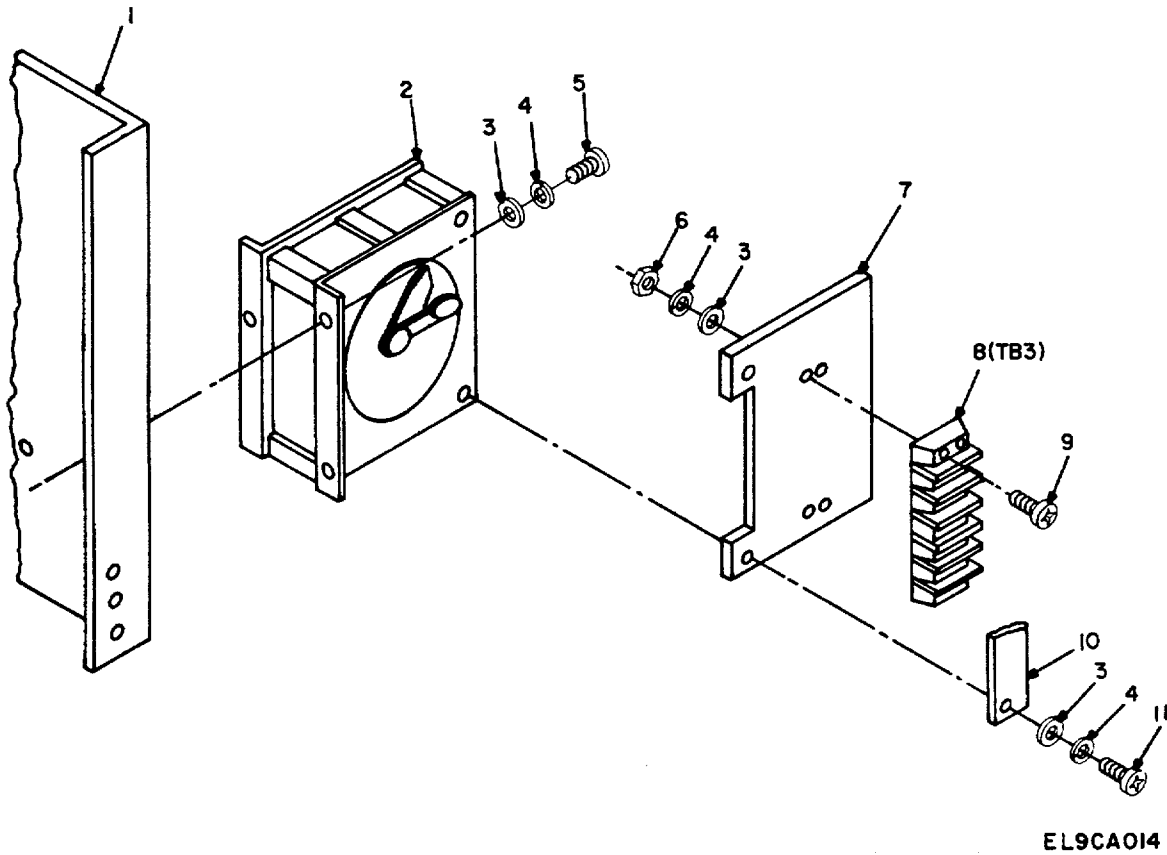


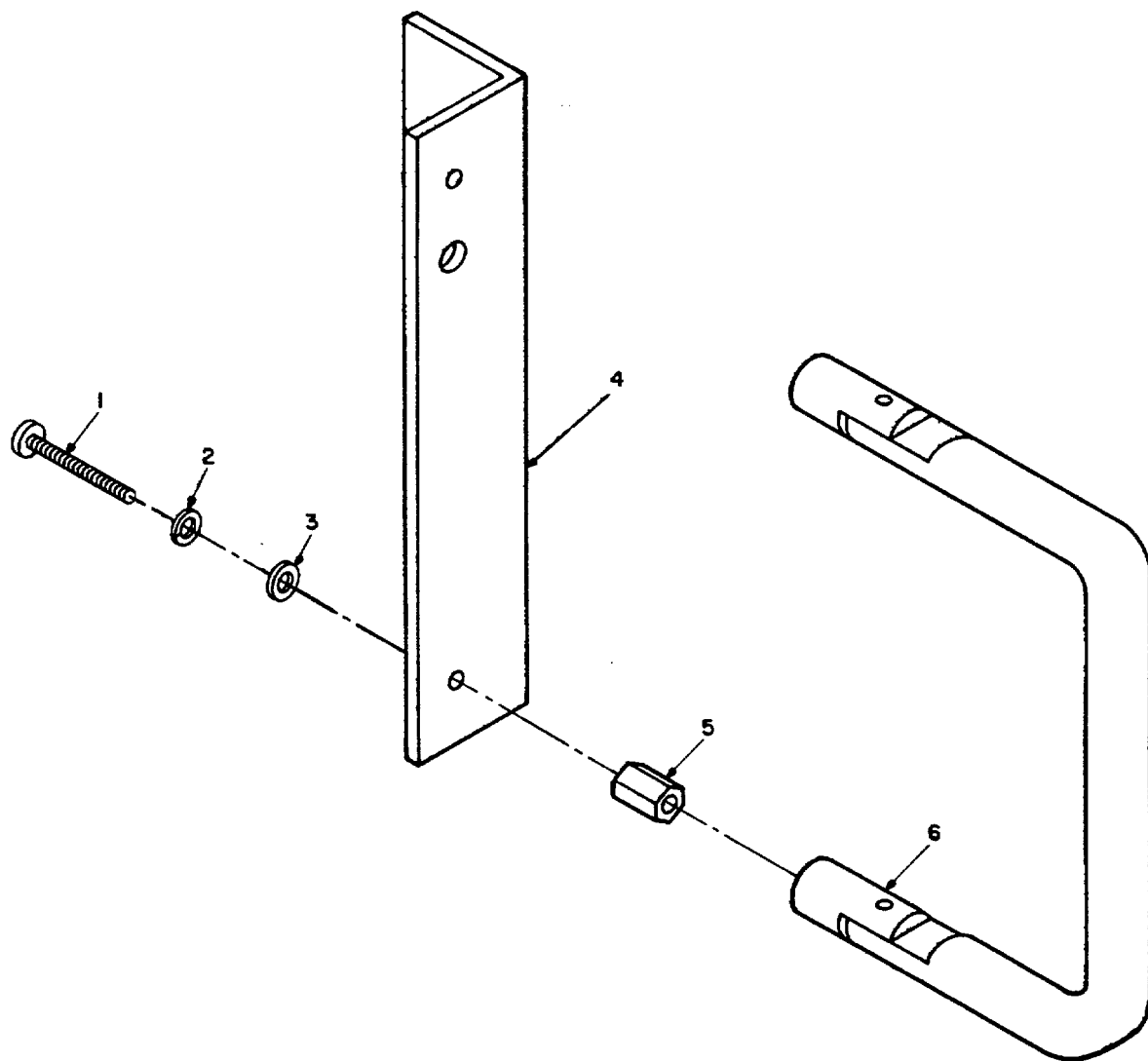
Figure 6. Timer assembly, SM-C-817700.

## SECTION II

TM11-6130-396-34P

(1) ITEM NO	(2) SMR CODE	(3) FSCM	(4) PART NUMBER	(5) DESCRIPTION AND USABLE ON CODES(UOC)	(6) QTY
				GROUP 0104 TIMER ASSEMBLY, SM-C-817700	
				FIG 6	
1	XBFZZ	80063	SM-C-817706	SUPPORT BRACKET TIM .....	1
2	PAFZZ	80063	440AP120ME2042A- 05296	RELAY, MOTOR DRIVEN .....	1
3	PAOZZ	80063	SM-B-416109-1	WASHER, FLAT .....	9
4	PAFZZ	96906	MS35338-136	WASHER, LOCK .....	9
5	PAFZZ	96906	MS35275-228	SCREW, MACHINE .....	3
6	PAOZZ	96906	MS35649-264	NUT, PLAIN, HEXAGON .....	4
7	XBFZZ	80063	SM-C-817719	BRACKET, TIMER .....	1
8	PAFZZ	81349	40TB5	TERMINAL BOARD .....	1
9	PAFZZ	96906	M535275-232	SCREW, MACHINE .....	4
10	XBFZZ	80063	SM-B-836486	TIMER;STOP .....	1
11	PAOZZ	96906	MS35275-230	SCREW, MACHINE .....	2

END OF FIGURE



EL9CA015

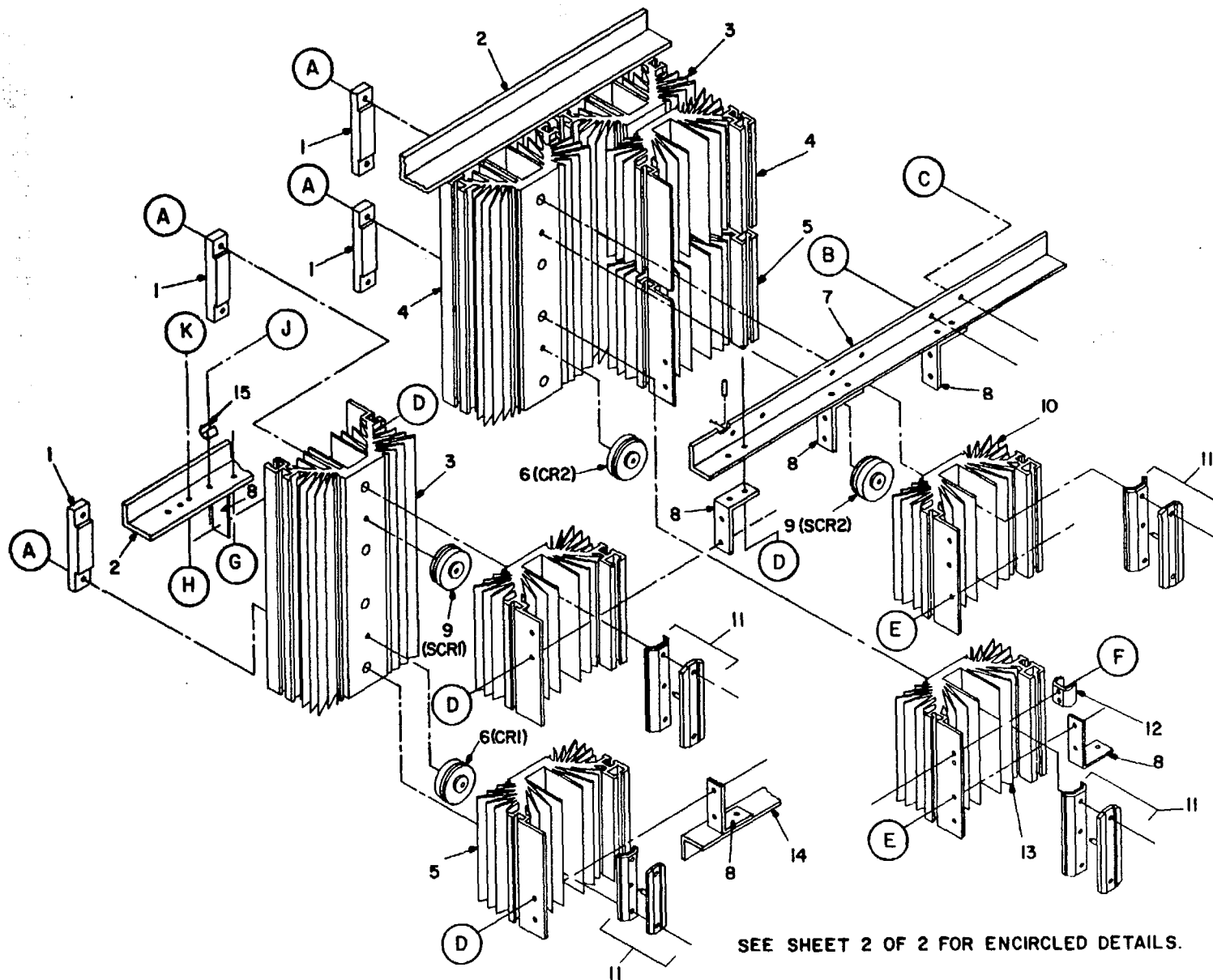
Figure 7. Handle assembly, SM-C-836531.

## SECTION II

TM11-6130-396-34P

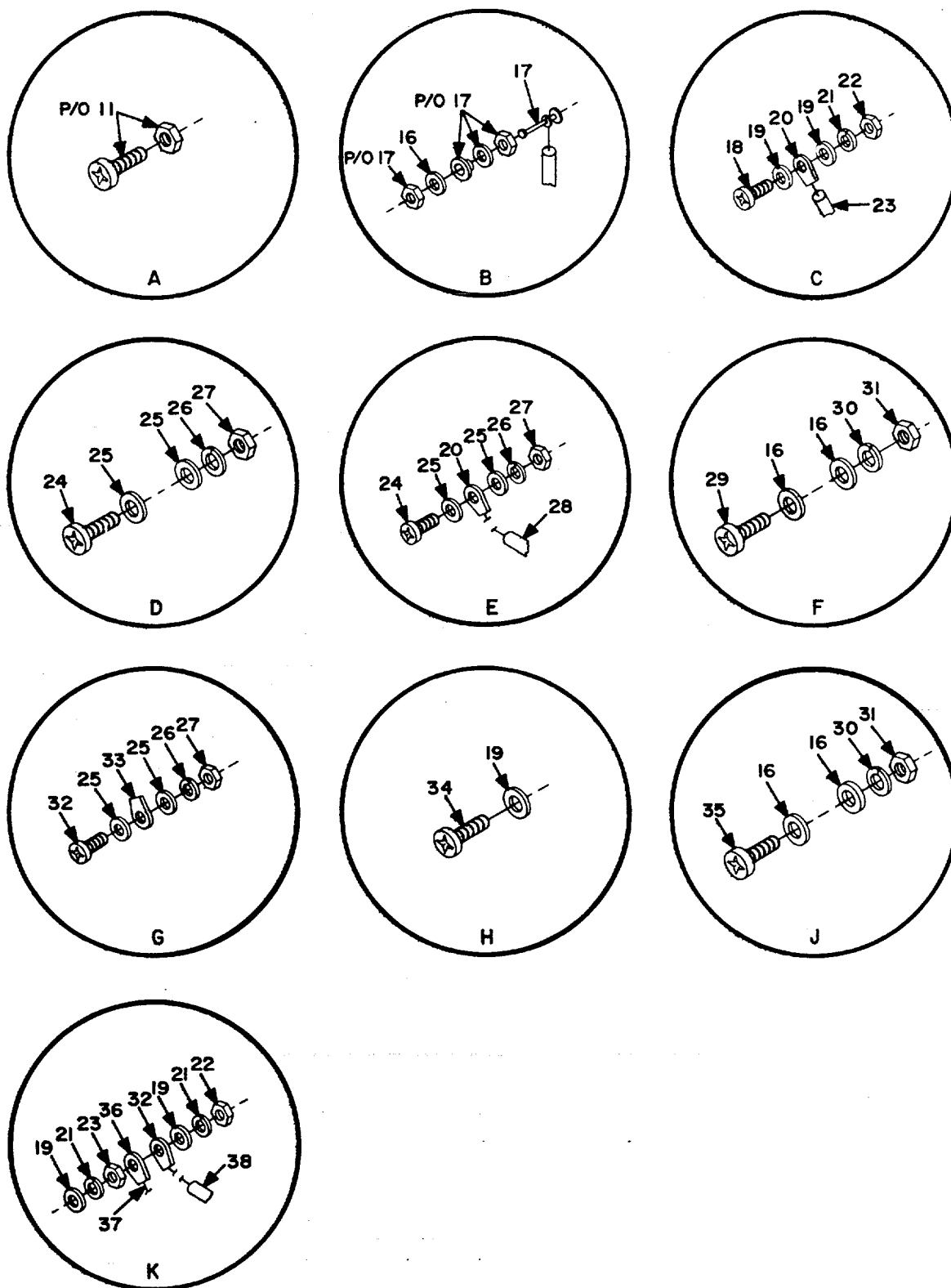
(1) ITEM NO	(2) SMR CODE	(3) FSCM	(4) PART NUMBER	(5) DESCRIPTION AND USABLE ON CODES(UOC)	(6) QTY
				GROUP 0104 HANDLE ASSEMBLY, SM-C-836531	
				FIG 7	
1	PAFZZ	96906	MS35274-64	SCREW, MACHINE.....	2
2	PAFZZ	96906	M535338-138	WASHER, LOCK.....	2
3	PAFZZ	06424	0770-9	WASHER, FLAT.....	4
4	XBFZZ	80063	SM-C-836494	BRACKET, HANDLE .....	1
5	XBFZZ	06540	8756-A-1032	STANDOFF, HEXAGON.....	4
6	XBFZZ	06540	12750B1032-6	HANDLE.....	1

END OF FIGURE



EL9CA016

Figure 8. SCR/diode heat sink assembly, SM-D-836475 (Sheet 1 of 2).



EL9CA017

Figure 8. SCR/diode heat sink assembly, SM-D-836475 (Sheet 2 of 2).

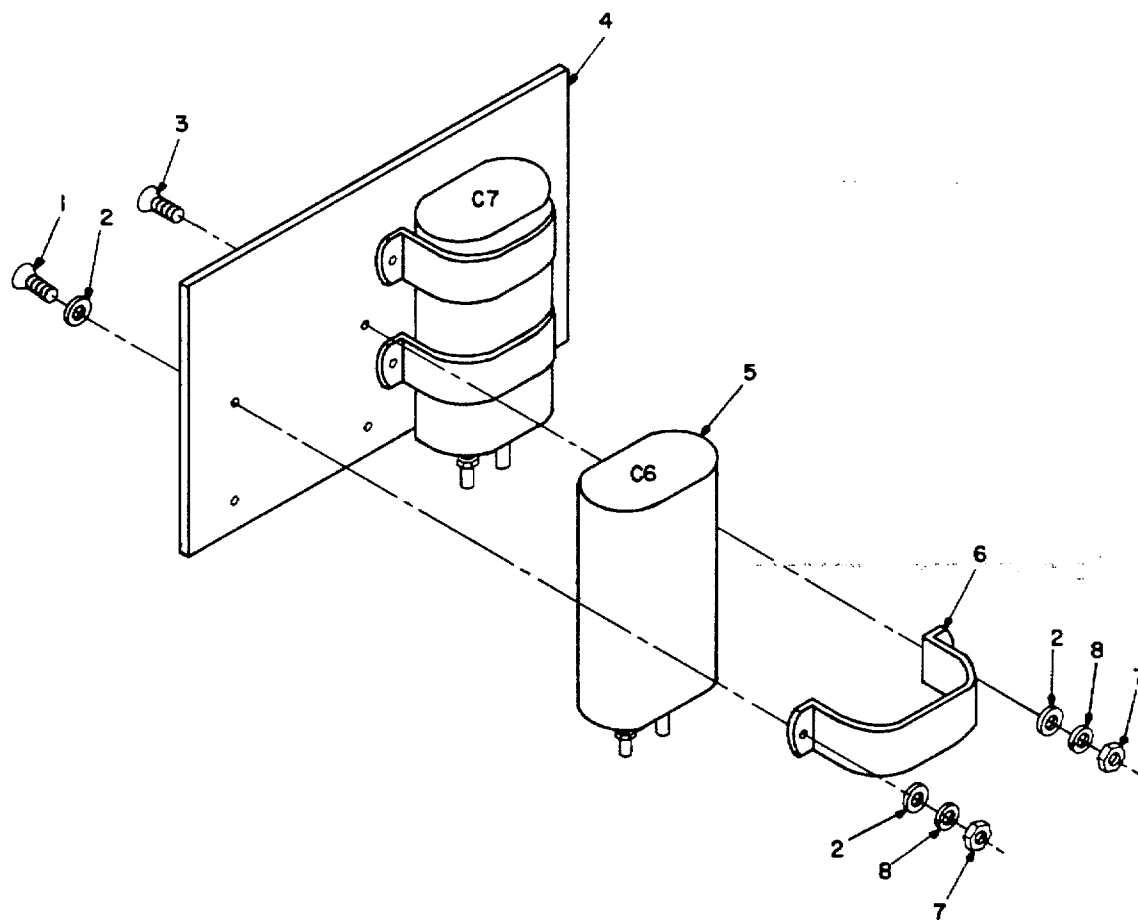


## SECTION II

TM11-6130-396-34P

(1) ITEM NO	(2) SMR CODE	(3) FSCM	(4) PART NUMBER	(5) DESCRIPTION AND USABLE ON CODES(UOC)	(6) QTY
GROUP 0104 SCR/DIODE HEAT SINK ASSEMBLY, SM-D-836475					
FIG 8					
1	XBFZZ	05820	130-A	STUD BAR .....	6
2	XBFZZ	80063	SM-B-836470	HEATSINK SUPPORT .....	1
3	XBFZZ	80063	SM-A-836513-1	HEATSINK .....	3
4	XBFZZ	80063	SM-A-836508-1	HEATSINK, SCR .....	2
5	XBFZZ	80063	SM-A-836510-1	HEATSINK .....	2
6	PAFZZ	03538	A390C	SEMICONDUCTOR DEVIC.....	3
7	XBFZZ	80063	SM-B-836469	BRACKET, HEATSINK. ....	1
8	XBFZZ	80063	SM-B-836452	BRACKET, HEAT SINK .....	9
9	XBFZZ	12532	63502	SEMICONCOND DVC, DIODE .....	3
10	XBFZZ	80063	SM-A-836509-1	HEATSINK .....	1
11	XBFZZ	05820	130-2	SPRING ASSY .....	6
12	XDFZZ	81349	M24066/2-228	CLIP, SPRING TENSION.....	1
13	XBFZZ	80063	SM-A-836511-1	HEATSINK .....	1
14	XBFZZ	80063	SM-B-836495	BRACKET, BOTTOM .....	1
15	XBFZZ	81349	M24066/2-209	CLIP, SPRING TENSION .....	3
16	PAFZZ	96906	M515795-803	WASHER, FLAT .....	13
17	XBFZZ	88245	1432-9	TERMINAL, INS .....	3
18	PAFZZ	96906	MS35214-27	SCREW, MACHINE .....	3
19	PAFZZ	96906	MS15795-905	WASHER, FLAT .....	42
20	PAFZZ	96906	MS25036-106	TERMINAL, LUG .....	5
21	PAFZZ	96906	MS35338-98	WASHER, LOCK ..	21
22	PAFZZ	96906	MS35649-265	NUT, PLAIN, HEXAGON .....	21
23	PAFZZ	81349	RWR74S3R01FS	RESISTOR, FIXED, WIRE .....	3
24	PAFZZ	96906	MS35275-230	SCREW, MACHINE .....	34
25	PAFZZ	80063	SM-B-416109-1	WASHER, FLAT .....	74
26	PAFZZ	96906	MS35338-136	WASHER, LOCK .....	37
27	PAFZZ	96906	MS35649-264	NUT, PLAIN, HEXAGON .....	37
28	PAFZZ	81349	CQR29A1MB125J3P	CAPACITOR, FIXED, PLA .....	2
29	PAFZZ	96906	MS35275-215	SCREW, MACHINE .....	2
30	PAFZZ	96906	MS35338-135	WASHER, LOCK .....	5
31	PAFZZ	96906	MS35649-244	NUT, PLAIN, HEXAGON .....	5
32	PAFZZ	96906	MS35275-231	SCREW, MACHINE .....	3
33	PAFZZ	96906	MS25036-101	TERMINAL, LUG .....	6
34	PAFZZ	96906	MS35214-29	SCREW, MACHINE .....	9
35	PAFZZ	96906	MS35275-217	SCREW, MACHINE .....	3
36	PAFZZ	96906	MS25036-111	TERMINAL, LUG .....	1
37	PAFZZ	92194	1231	BRAID, WIRE .....	8
38	PAFZZ	81349	CQR29A1MBC224K3M	CAPACITOR, FIXED, PLA.....	3

END OF FIGURE



EL9CA018

Figure 9. Capacitor assembly, SM-C-836477-2,

## SECTION II

TM11-6130-396-34P

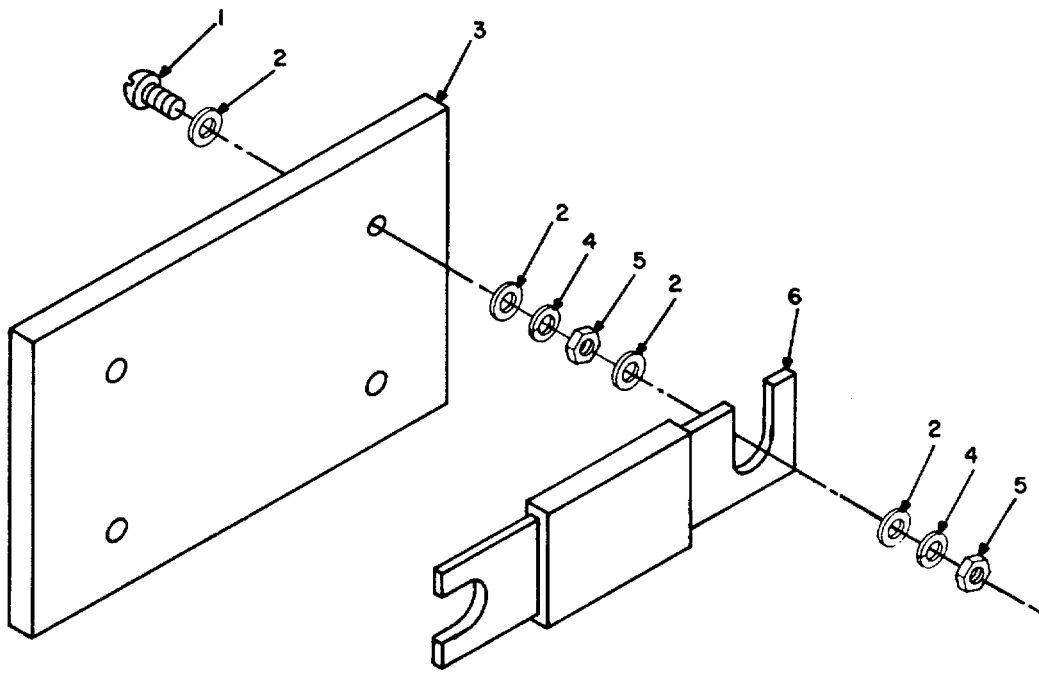
(1) ITEM NO	(2) SMR CODE	(3) FSCM	(4) PART NUMBER	(5) DESCRIPTION AND USABLE ON CODES(UOC)	(6) QTY
-------------------	--------------------	-------------	-----------------------	---	------------

GROUP 0104 CAPACITOR ASSEMBLY,  
SM-C-836477-2

FIG 9

1	PAFZZ	96906	MS35190-253	SCREW, MACHINE .....	4
2	PAFZZ	96906	MS15795-807	WASHER, FLAT .....	12
3	PAFZZ	96906	MS35275-245	SCREW, MACHINE .....	4
4	MDFZZ	80063	SM-C-817721	PLATE, CAPACITOR .....	1
5	PAFZZ	14655	26F6622FA	CAPACITOR FIXED .....	2
6	PAFZZ	14655	30393-5	STRAP, RETAINING .....	4
7	PAFZZ	96906	MS35649-282	NUT, PLAIN, HEXAGON .....	8
8	PAFZZ	96906	MS35338-137	WASHER, LOCK .....	8

END OF FIGURE



EL9CA019

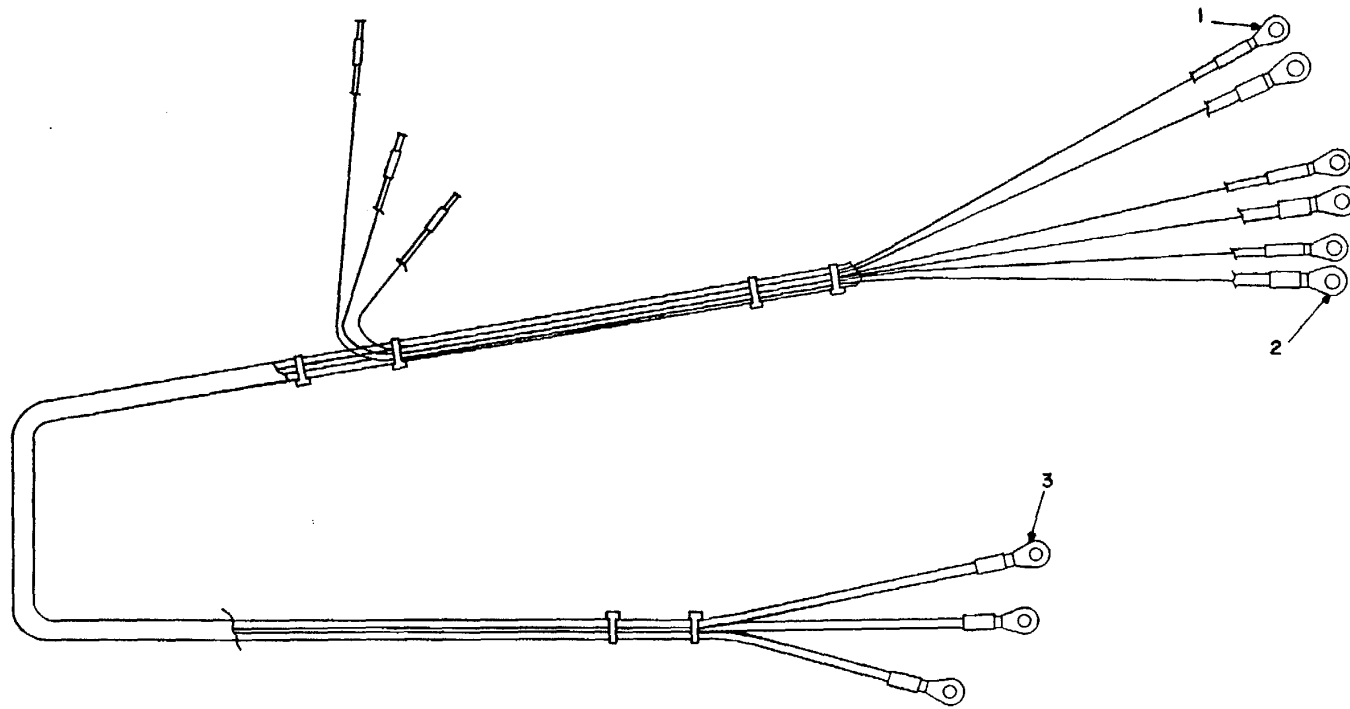
Figure 10. Fuse assembly, SM-C-817701.

## SECTION II

TM11-6130-396-34P

(1) ITEM NO	(2) SMR CODE	(3) FSCM	(4) PART NUMBER	(5) DESCRIPTION AND USABLE ON CODES(UOC)	(6) QTY
GROUP 0104 FUSE ASSEMBLY, SM-C-817701					
FIG 10					
1	XBFZZ	80063	SM-A-743352-1	SCREW, MACHINE .....	2
2	PAFZZ	96906	MS15795-910	WASHER, FLAT .....	8
3	XBHZZ	80063	SM-B-817708	PLATE MTG, LINE FUSE .....	1
4	PAFZZ	96906	MS35338-101	WASHER, LOCK .....	4
5	PAFZZ	96906	MS35649-2255	NUT, PLAIN, HEXAGON .....	4
6	XBFZZ	71400	ANL500	FUSE, CARTRIDGE .....	1

END OF FIGURE



EL9CA020

Figure 11. Harness assembly, SM-D-817714.

SECTION II

TM11-6130-396-34P

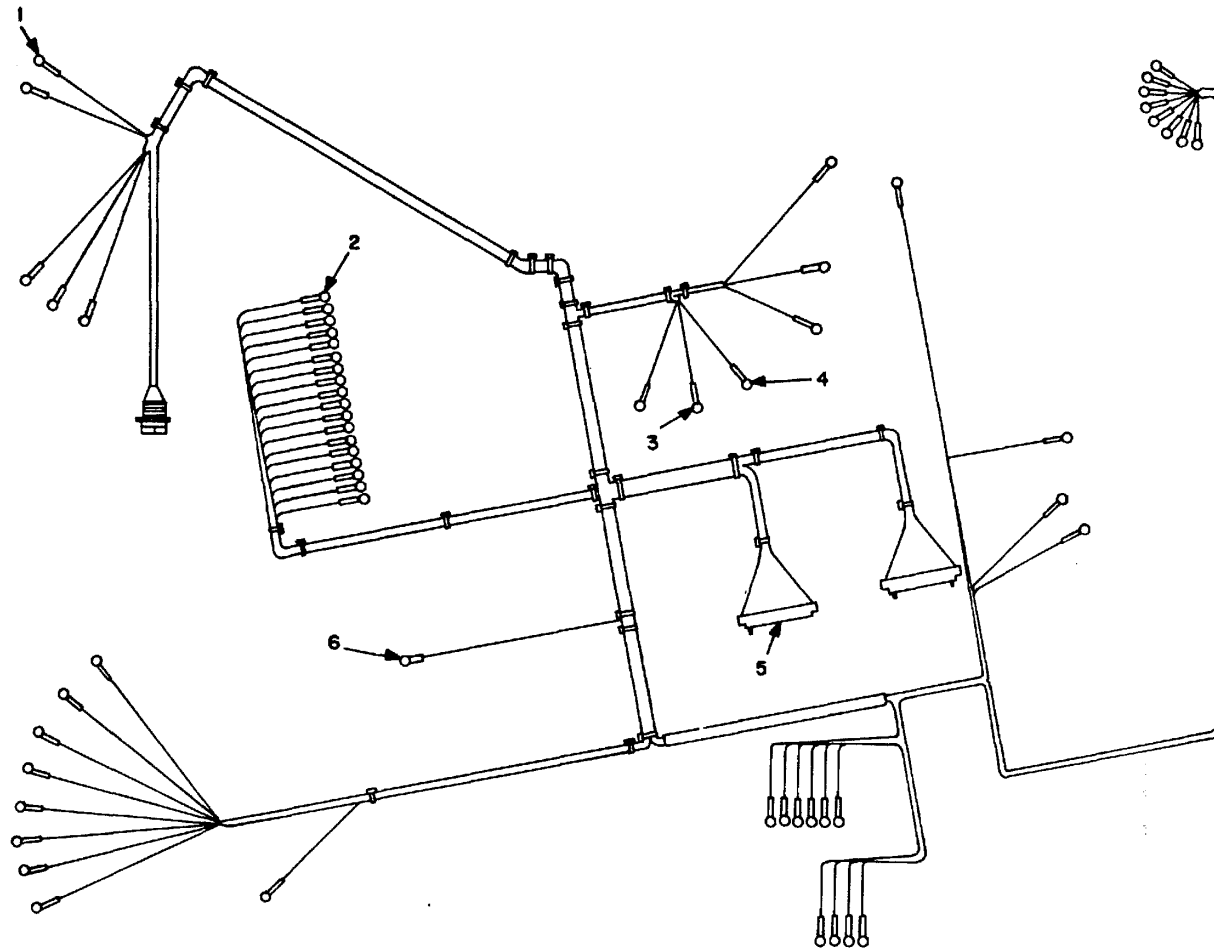
(1)	(2)	(3)	(4)	(5)	(6)
ITEM	SMR	FSCM	PART	DESCRIPTION AND USABLE ON CODES(UOC)	QTY
NO	CODE	FSCM	NUMBER	DESCRIPTION AND USABLE ON CODES(UOC)	QTY

GROUP 0104 HARNESS ASSEMBLY,  
SM-D-817714

FIG 11

1	PAFZZ	96906	MS25036-154	TERMINAL, LUG .....	3
2	PAFZZ	96906	MS25036-157	TERMINAL, LUG .....	3
3	PAFZZ	96906	MS25036-156	TERMINAL, LUG .....	3

END OF FIGURE



EL9CA02I

Figure 12. Harness assembly, SM-D-817725.



## SECTION II

TM11-6130-396-34P

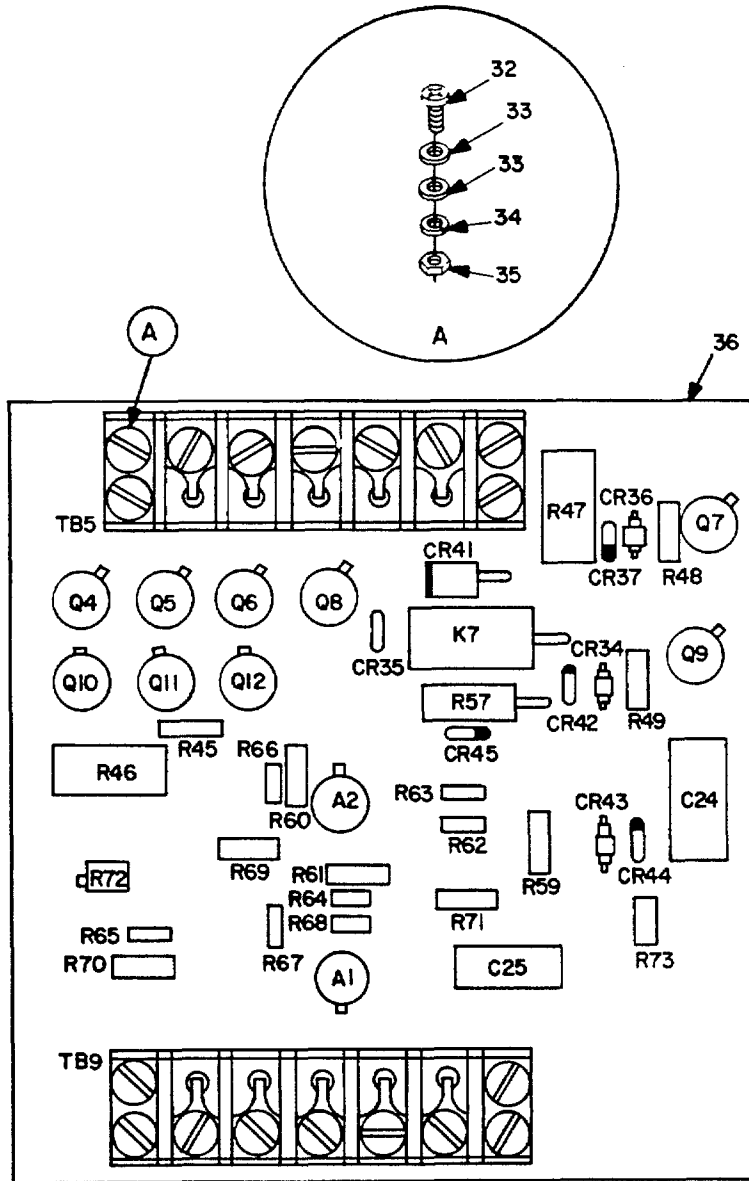
(1) ITEM NO	(2) SMR CODE	(3) FSCM	(4) PART NUMBER	(5) DESCRIPTION AND USABLE ON CODES(UOC)	(6) QTY
-------------------	--------------------	-------------	-----------------------	---	------------

GROUP 0104 HARNESS ASSEMBLY,  
SM-D-817725

FIG 12

1	PAFZZ	96906	MS25036-106	TERMINAL, LUG .....	2
2	PAFZZ	96906	MS25036-101	TERMINAL, LUG .....	50
3	PAFZZ	96906	MS25036-149	TERMINAL, LUG .....	3
4	PAFZZ	96906	MS25036-153	TERMINAL, LUG .....	2
5	XBFZZ	81349	M55302/58H44X	CONNECTOR, RECPT .....	2
6	PAFZZ	96906	MS25036-150	TERMINAL, LUG .....	5

END OF FIGURE



REF. DES.	ITEM NO.
A1, 2	1
CR34	2
CR35	3
CR36	4
CR37	5
CR41	6
CR42	3
CR43	7
CR44,45	3
C24	8
C25	9
K7	10
Q4-6	11
Q7,8	12
Q9	11
Q10-12	13
R45	14
R46	15
R47	16
R48	17
R49	18
R57	19
R59	20
R60	21
R61	22
R62	23
R63	24
R64-67	18
R68	26
R69	27
R70	28
R71	22
R72	29
R73	30
TB5	31
TB9	31

NOTE:

1. PREFIX ALL REFERENCE DESIGNATIONS WITH AR3
2. ITEM 25 NOT USED.

EL9CA022

Figure 13. Circuit card assembly, AR3, SM-C-836468.

## SECTION II

TM11-6130-396-34P

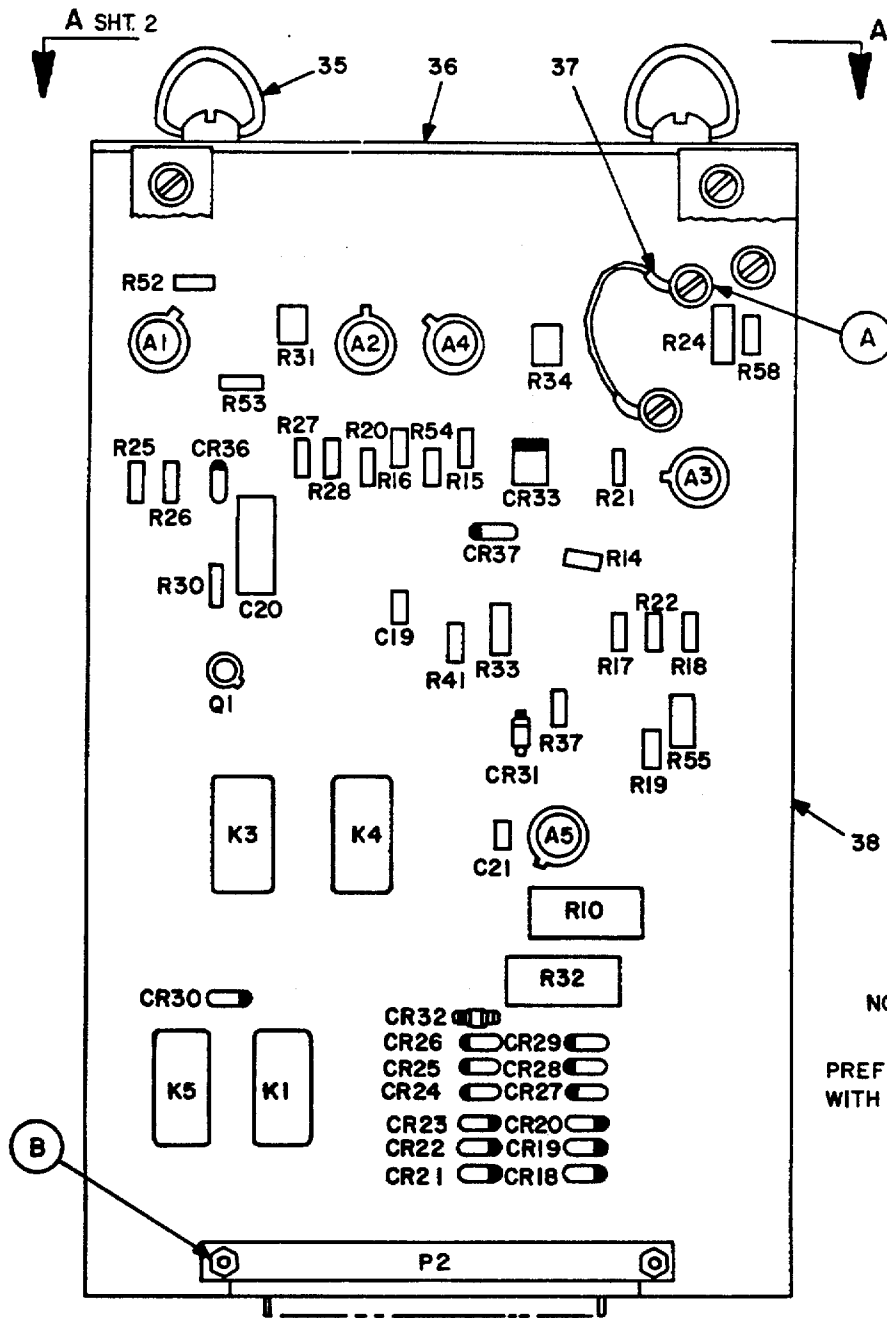
(1) ITEM NO	(2) SMR CODE	(3) FSCM	(4) PART NUMBER	(5) DESCRIPTION AND USABLE ON CODES(UOC)	(6) QTY
-------------------	--------------------	-------------	-----------------------	---	------------

GROUP 010401 CIRCUIT CARD ASSEMBLY  
AR3, SM-C-836468

FIG 13

1	PADZZ	81349	M38510/10101BGA	MICROCIRCUIT, LINEAR .....	2
2	PADZZ	81349	JAN1N4970	SEMICONDUCTOR DEVIC .....	1
3	PADZZ	81349	JAN1N649	SEMICONDUCTOR DEVIC .....	4
4	PADZZ	81349	JAN1N4965	SEMICONDUCTOR DEVIC .....	1
5	PADZZ	81349	JAN1N943B	SEMICONDUCTOR DEVIC .....	1
6	PADZZ	81349	JAN1N3020	SEMICONDUCTOR DEVIC .....	1
7	PADZZ	81349	JAN1N4961	SEMICONDUCTOR DEVIC .....	1
8	PADZZ	81349	M39003/01-3021	CAPACITOR, FIXED, ELE .....	1
9	PADZZ	81349	M39003/01-2994	CAPACITOR, FIXED, ELE .....	1
10	PADZZ	81349	M39016/6-109M	RELAY, ELECTROMAGNET .....	1
11	PADZZ	81349	JAN2N3019	TRANSISTOR .....	4
12	PADZZ	81349	JAN2N1893	TRANSISTOR .....	2
13	PADZZ	81349	JAN4N24	COUPLER, OPTOELECTRO .....	3
14	PADZZ	81349	RCR20G103JS	RESISTOR, FIXED, COMP .....	1
15	PADZZ	81349	RCR42G621JS	RESISTOR, FIXED, COMP .....	1
16	PADZZ	81349	RCR42G331JS	RESISTOR, FIXED, COMP .....	1
17	PADZZ	81349	RCR20G561JS	RESISTOR, FIXED, COMP .....	1
18	PADZZ	81349	RCR20G102JS	RESISTOR, FIXED, COMP .....	5
19	PADZZ	81349	RCR32G152JS	RESISTOR, FIXED, COMP .....	1
20	PADZZ	81349	RCR20G222JS	RESISTOR, FIXED, COMP .....	1
21	PADZZ	81349	RCR20G183JS	RESISTOR, FIXED, COMP .....	1
22	PADZZ	81349	RCR20G682JS	RESISTOR, FIXED, COMP .....	2
23	PADZZ	81349	RCR07G102JS	RESISTOR, FIXED, COMP .....	1
24	PADZZ	81349	RCR07G332JS	RESISTOR, FIXED, COMP .....	1
26	PADZZ	16845	1000-483-23	RESISTOR, FIXED .....	1
27	PADZZ	81349	RCR20G152JS	RESISTOR, FIXED, COMP .....	1
28	PADZZ	81349	RCR20G153JS	RESISTOR, FIXED, COMP .....	1
29	PADZZ	81349	RJR26FX102P	RESISTOR, VARIABLE, N .....	1
30	PADZZ	81349	RCR20G332JS	RESISTOR, FIXED, COMP .....	1
31	PADZZ	81349	40TB5	TERMINAL BOARD .....	2
32	PADZZ	96906	MS35276-208	SCREW, MACHINE .....	8
33	PADZZ	80063	SM-B-416109-1	WASHER, FLAT .....	16
34	PADZZ	96906	MS35338-136	WASHER, LOCK .....	8
35	PADZZ	96906	MS35649-264	NUT, PLAIN, HEXAGON .....	8
36	XADZZ	80063	SM-C-836541	PRINTED WIRING BD .....	1

END OF FIGURE



REF. DES.	ITEM NO.
A1	1
A2	1
A3	1
A4	1
A5	2
CR18	3
CR19	3
CR20	3
CR21	3
CR22	3
CR23	3
CR24	3
CR25	3
CR26	3
CR27	3
CR28	3
CR29	3
CR30	3
CR31	4
CR32	4
CR33	5
CR36	3
CR37	3
C19	6
C20	7
C21	8
J1	9
J2	10
K1	11
K3	11
K4	11
K5	11
P2	12
Q1	13

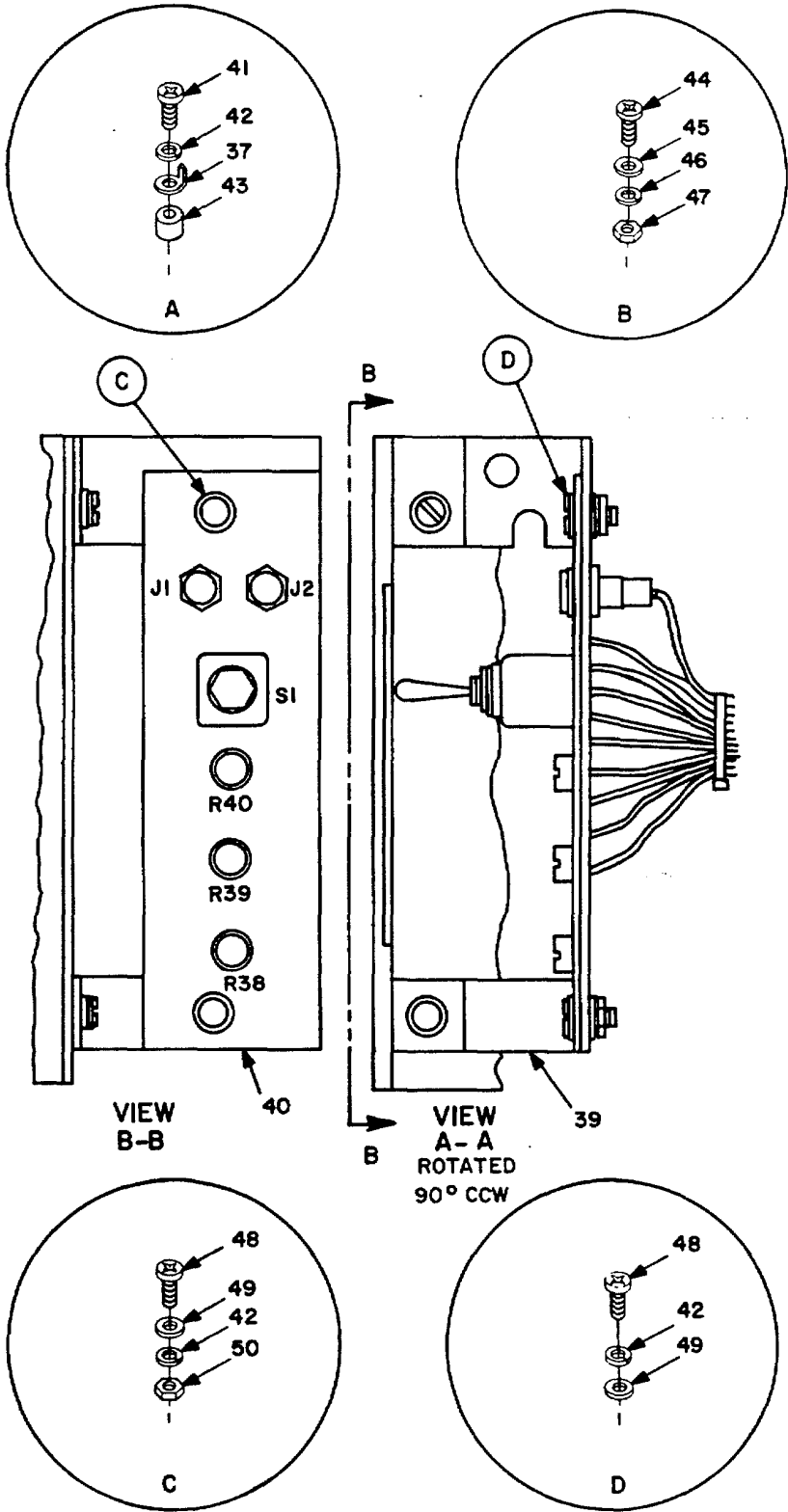
REF. DES.	ITEM NO.
R10	14
R14	15
R15	16
R16	16
R17	16
R18	17
R19	15
R20	18
R21	19
R22	16
R24	20
R25	21
R26	21
R27	21
R28	21
R30	22
R31	23
R32	14
R33	24
R34	25
R37	26
R38	27
R39	27
R40	27
R41	28
R52	29
R53	29
R54	30
R55	31
R58	32
SI	33

NOTE: ITEM 34 NOT USED.

PREFIX REFERENCE DESIGNATION WITH AR2.

EL9CA023

Figure 14. Circuit card assembly, AR2, SM-D-817703, (Sheet 1 of 2).



EL9CA024

Figure 14. Circuit card assembly, AR2, SM-D-817703, (Sheet 2 of 2).

## SECTION II

TM11-6130-396-34P

(1) ITEM NO	(2) SMR CODE	(3) FSCM	(4) PART NUMBER	(5) DESCRIPTION AND USABLE ON CODES(UOC)	(6) QTY
GROUP 010401 CIRCUIT CARD ASSEMBLY AR2, SM-D-817703					
FIG 14					
1	PADZZ	81349	M38510/10101BGA	MICROCIRCUIT, LINEAR .....	4
2	PADZZ	81349	M38510/10201BIA	MICROCIRCUIT, LINEAR .....	1
3	PADZZ	81349	JAN1N645	SEMICONDUCTOR DEVIC .....	15
4	PADZZ	81349	JAN1N4961	SEMICONDUCTOR DEVIC .....	2
5	PADZZ	81349	JAN1N3826A	SEMICONDUCTOR DEVIC .....	1
6	PADZZ	81349	M39003/01-5630	CAPACITOR, FIXED, ELE .....	1
7	XBDZZ	81349	M39003/01-5038	CAPACITOR, FXD, ELEC .....	1
8	XBDZZ	81349	M39014/01-1529	CAPACITOR, FXD, CER .....	1
9	PADZZ	81349	M39024-10-03	JACK, TIP .....	1
10	PADZZ	81349	M39024-10-02	JACK, TIP .....	1
11	XBDZZ	81349	M39016-6-109M	RELAY, ELECTROMAGNET .....	4
12	XBDZZ	81349	M55302/57A44X	CONNECTOR, RECEPTAC .....	1
13	PADZZ	81349	JAN2N2222A	TRANSISTOR .....	1
14	PADZZ	81349	RCR42G331JS	RESISTOR, FIXED, COMP .....	2
15	PADZZ	81349	RCR07G152JS	RESISTOR, FIXED, COMP .....	2
16	PADZZ	81349	RCR07G102JS	RESISTOR, FIXED, COMP .....	4
17	PADZZ	81349	RCR20G682JS	RESISTOR, FIXED, COMP .....	1
18	PADZZ	16845	1000-483-23	RESISTOR, FIXED .....	1
19	PADZZ	81349	RCR07G563JS	RESISTOR, FIXED, COMP .....	1
20	PADZZ	81349	RCR20G152JS	RESISTOR, FIXED, COMP .....	1
21	PADZZ	16845	1000-409-16	TRANSISTOR .....	4
22	PADZZ	81349	RCR07G122JS	RESISTOR, FIXED, COMP .....	1
23	PADZZ	81349	RJR26FX502P	RESISTOR, VARIABLE, N .....	1
24	PADZZ	81349	RCR20G821JS	RESISTOR, FIXED, COMP .....	1
25	PADZZ	81349	RJR26FX102P	RESISTOR, VARIABLE, N .....	1
26	XBDZZ	81349	RLR07C8200GR	RESISTOR, FIXED, FILM .....	1
27	XBDZZ	81349	RJ50CP202	RESISTOR, VARIABLE, N .....	3
28	XBDZZ	81349	RLR07C2201GR	RESISTOR, FIXED, FILM .....	1
29	PADZZ	81349	RCR07G332JS	RESISTOR, FIXED, COMP .....	2
30	PADZZ	81349	RCR07G333JS	RESISTOR, FIXED, COMP .....	1
31	PADZZ	81349	RCR20G271JS	RESISTOR, FIXED, COMP .....	1
32	PADZZ	81349	RNC55H1802FM	RESISTOR, FIXED, FILM .....	1
33	PADZZ	96906	MS21355-271	SWITCH, TOGGLE .....	1
35	XBDZZ	94222	82-16-260-16W/82 -32-101-17	FASTENER, STUD.....	2
36	XBDZZ	80063	SM-B-817724	BRACKET, PC BOARD .....	1
37	PADZZ	96906	MS20659-138	TERMINAL, LUG .....	3
38	PADZZ	80063	SM-D-817696	P.C. BOARD AMP CIR .....	1
39	XBDZZ	80063	SM-C-817707	BRACKET, PC BOARD .....	1
40	XADZZ	80063	SM-C-817697	PRINTED WIRING BD .....	1
41	PADZZ	96906	MS35275-213	SCREW, MACHINE .....	2
42	PADZZ	96906	MS35338-136	WASHER, LOCK .....	4
43	PADZZ	51196	1616-A-4-21	TERMINAL, STANDOFF .....	2
44	PADZZ	96906	MS35275-205	SCREW, MACHINE ... ..	2
45	PADZZ	96906	MS15795-802	WASHER, FLAT .....	2
46	PADZZ	96906	MS35338-134	WASHER, LOCK .....	2

## SECTION II

TM11-6130-396-34P

(1) ITEM NO	(2) SMR CODE	(3) FSCM	(4) PART NUMBER	(5) DESCRIPTION AND USABLE ON CODES(UOC)	(6) QTY
47	PADZZ	96906	MS35649-224	NUT, PLAIN, HEXAGON .....	2
48	PADZZ	96906	MS35275-228	SCREW, MACHINE .....	4
49	PADZZ	96906	MS15795-805	WASHER, FLAT .....	6
50	PADZZ	96906	MS35649-264	NUT, PLAIN, HEXAGON .....	2

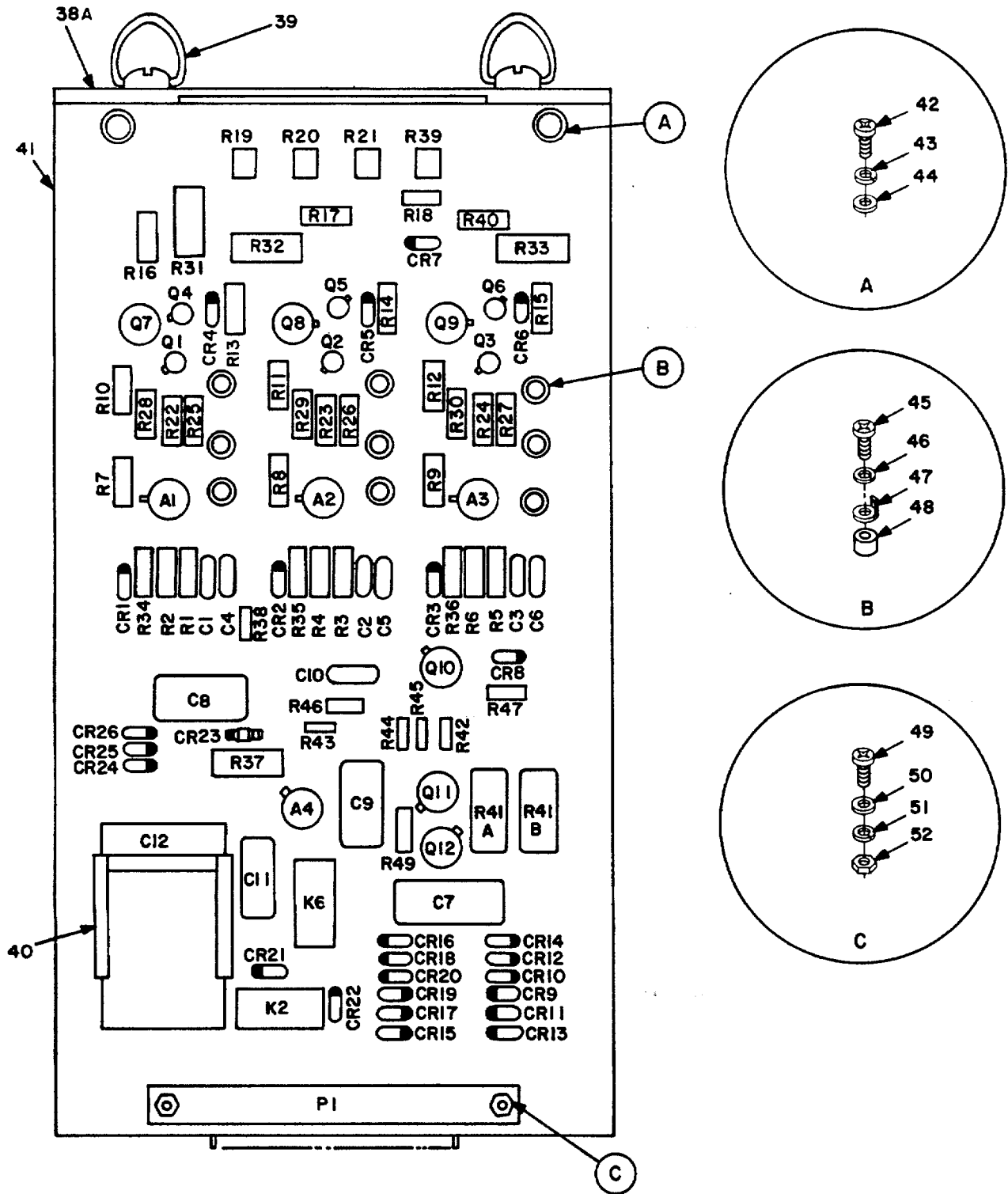
END OF FIGURE

REF. DES.	ITEM NO.	REF. DES.	ITEM NO.
A1	1	Q9	17
A2	1	Q10	18
A3	1	Q11	18
A4	2	Q12	18
CR1	3	R1	19
CR2	3	R2	19
CR3	3	R3	19
CR4	3	R4	19
CR5	3	R5	19
CR6	3	R6	19
CR7	3	R7	20
CR8	3	R8	20
CR9	3	R9	20
CR10	3	R10	21
CR11	3	R11	21
CR12	3	R12	21
CR13	3	R13	22
CR14	3	R14	22
CR15	3	R15	22
CR16	3	R16	23
CR17	3	R17	23
CR18	3	R18	23
CR19	3	R19	24
CR20	3	R20	24
CR21	3	R21	24
CR22	3	R22	25
CR23	4	R23	25
CR24	3	R24	25
CR25	3	R25	25
CR26	3	R26	25
C1	5	R27	25
C2	5	R28	26
C3	5	R29	26
C4	6	R30	26
C5	6	R31	27
C6	6	R32	27
C7	7	R33	27
C8	8	R34	28
C9	9	R35	28
C10	10	R36	28
C11	11	R37	29
C12	12	R38	30
K2	13	R39	24
K6	13	R40	31
P1	14	R41A	32
Q1	15	R41B	32
Q2	15	R42	33
Q3	15	R43	34
Q4	16	R44	35
Q5	16	R45	36
Q6	16	R46	19
Q7	17	R47	37
Q8	17	R49	38

EL9CA025

Figure 15. Circuit card assembly, AR1, SM-D-817702, (Sheet 1 of 2).





PREFIX ALL REFERENCE DESIGNATIONS WITH ARI.

EL9CA026

Figure 15. Circuit card assembly, AR1, Sm-D-817702, (Sheet 2 of 2).

## SECTION II

TM11-6130-396-34P

(1) ITEM NO	(2) SMR CODE	(3) FSCM	(4) PART NUMBER	(5) DESCRIPTION AND USABLE ON CODES(UOC)	(6) QTY
GROUP 010401 CIRCUIT CARD ASSEMBLY AR1, SM-D-817702					
FIG 15					
1	PADZZ	12040	LM158H/883	MICROCIRCUIT, DGTL .....	3
2	PADZZ	33809	LM109H/883B	REGULATOR.....	1
3	PADZZ	81349	JAN1N647	SEMICONDUCTOR DEVIC.....	25
4	PADZZ	81349	JAN1N4965	SEMICONDUCTOR DEVIC .....	1
5	PADZZ	81349	M39003/01-2596	CAPACITOR, FXD, ELEC .....	3
6	PADZZ	81349	M39003/01-3061	CAPACITOR, FIXED, ELE .....	3
7	PADZZ	81349	M39006/22-0517	CAPACITOR, FIXED, ELE .....	1
8	PADZZ	81349	M39006/22-0557	CAPACITOR, FIXED, ELE .....	1
9	PADZZ	81349	M39003-01-3021	CAPACITOR, FIXED, ELE .....	1
10	PADZZ	81349	M39003/01-2286	CAPACITOR, FXD, ELEC .....	1
11	PADZZ	81349	M39006/22-0571	CAPACITOR, FIXED, ELE .....	1
12	XBDZZ	81349	M39018/03-0640	CAPACITOR, FXD, CER .....	1
13	PADZZ	81349	M39016-6-109M	RELAY, ELECTROMAGNET .....	2
14	XBDZZ	81349	M55302/57A44X	CONNECTOR, RECEPTACL .....	1
15	PADZZ	80131	2N2646	TRANSISTOR .....	3
16	PADZZ	81349	JAN2N2222A	TRANSISTOR .....	3
17	PADZZ	81349	JAN4N24	COUPLER, OPTOELECTRO .....	3
18	PADZZ	81349	JAN2N1893	TRANSISTOR .....	3
19	PADZZ	81349	RCR20G102JS	RESISTOR, FIXED, COMP .....	7
20	PADZZ	81349	RCR20G272JS	RESISTOR, FIXED, COMP .....	3
21	PADZZ	81349	RCR20G101JS	RESISTOR, FIXED, COMP .....	3
22	PADZZ	81349	RCR20G220JS	RESISTOR, FIXED, COMP .....	3
23	PADZZ	81349	RCR20G153JS	RESISTOR, FIXED, COMP .....	3
24	PADZZ	81349	RJ26CX103J	RESISTOR, VARIABLE, N .....	4
25	PADZZ	81349	RCR20G103JS	RESISTOR, FIXED, COMP .....	6
26	PADZZ	81349	RCR20G821JS	RESISTOR, FIXED, COMP .....	3
27	PADZZ	81349	RCR32G270JS	RESISTOR, FIXED, COMP .....	3
28	PADZZ	81349	RCR20G511JS	RESISTOR, FIXED, COMP .....	3
29	PADZZ	81349	RCR32G820JS	RESISTOR, FIXED, COMP .....	1
30	PADZZ	81349	RCR07G474JS	RESISTOR, FIXED, COMP .....	1
31	PADZZ	81349	RCR20G472J	RESISTOR, FIXED, COMP .....	1
32	PADZZ	81349	RCR42G510JS	RESISTOR, FIXED, COMP .....	2
33	PADZZ	81349	RCR07G013JS	RESISTOR, FIXED, COMP .....	1
34	PADZZ	81349	RCR07G222JS	RESISTOR, FIXED, COMP .....	1
35	PADZZ	81349	RCR07G104JS	RESISTOR, FIXED, COMP .....	1
36	PADZZ	81349	RCR07G152JS	RESISTOR, FIXED, COMP .....	1
37	PADZZ	81349	RCR20G333JS	RESISTOR, FIXED, COMP .....	1
38	PADZZ	81349	RCR07G224J	RESISTOR, FIXED, COMP .....	1
38A	XADZZ	80063	SM-B-817724	BRACKET, PC BOARD .....	1
39	XBDZZ	94222	82-16-260-16W/82 -32-101-17	FASTENER, STUD.....	2
40	PADZZ	81349	M24066/2-031	RETAINER, CAPACITOR .....	1
41	XADZZ	80063	SM-D-817695	PRINTED WIRING BD .....	1
42	PADZZ	96906	MS35275-228	SCREW, MACHINE .....	2
43	PADZZ	96906	MS35338-136	WASHER, LOCK .....	2
44	PADZZ	96906	MS15795-805	WASHER, FLAT .....	2

## SECTION II

TM11-6130-396-34P

(1) ITEM NO	(2) SMR CODE	(3) FSCM	(4) PART NUMBER	(5) DESCRIPTION AND USABLE ON CODES(UOC)	(6) QTY
45	PADZZ	96906	MS35275-213	SCREW, MACHINE .....	9
46	PADZZ	96906	MS35338-135	WASHER, LOCK .....	9
47	PADZZ	96906	MS20659-138	TERMINAL, LUG .....	9
48	PADZZ	51196	1616-A-4-21	TERMINAL, STANDOFF .....	9
49	PADZZ	96906	MS35275-205	SCREW, MACHINE .....	2
50	PADZZ	96906	MS15795-802	WASHER, FLAT .....	2
51	PADZZ	96906	MS35338-134	WASHER, LOCK .....	2
52	PADZZ	96906	MS35649-224	NUT, PLAIN, HEXAGON .....	2

END OF FIGURE

## NATIONAL STOCK NUMBER AND PART NUMBER INDEX

## NATIONAL STOCK NUMBER INDEX

STOCK NUMBER	FIG.	ITEM	STOCK NUMBER	FIG.	ITEM
5310-00-019-0672	1	48	5905-00-141-1165	13	22
5305-00-021-3616	1	70		14	17
5310-00-045-5203	8	19	5905-00-141-1168	13	20
5310-00-045-5207	4	7	5940-00-143-4775	11	3
5310-00-045-5210	1	47	5940-00-143-4777	11	2
	1	64	5910-00-156-7293	13	9
	10	2	6625-00-166-1005	2	11
5310-00-045-5212	4	32	5310-00-167-0671	4	31
5310-00-045-5214	4	23	5910-00-170-9793	15	5
5961-00-052-0666	13	5	5310-00-184-8970	1	46
5310-00-056-3394	4	25		1	65
5305-00-059-4568	9	1		4	27
5961-00-064-2379	13	3		10	4
5961-00-087-6047	14	3	5310-00-184-8971	4	24
5905-00-104-S330	15	37	5310-00-184-8977	8	21
5905-00-104-8348	13	30	5940-00-204-8990	8	36
5905-00-104-8349	15	28	5305-00-206-1288	8	18
5905-00-105-7764	15	34	5305-00-207-8253	1	67
5905-00-105-7767	15	30	5961-00-227-9770	13	4
5905-00-106-1246	13	19		15	4
5905-00-106-1273	13	28	5940-00-230-0515	11	1
	15	23	5910-00-236-8745	13	8
5905-00-106-1356	14	15		15	9
	15	36	5910-00-236-9885	14	6
5905-00-106-1357	14	19	5961-00-241-3456	13	11
5905-00-106-3666	15	33	5310-00-250-9477	1	58
5905-00-106-9344	15	21	5910-00-270-2447	15	6
5905-00-110-0196	13	18	5940-00-283-5280	8	20
	15	19		12	1
5905-00-110-0388	15	35	5905-00-407-6167	13	15
5905-00-110-7620	13	23	5961-00-427-0429	13	7
	14	16		14	4
5905-00-111-4738	13	27	5961-00-452-1245	13	2
	14	20	5905-00-456-0577	15	27
5940-00-113-3136	14	37	5305-00-543-5828	1	63
	15	47	5305-00-550-3934	4	34
5940-00-113-8184	12	6	5305-00-550-3935	1	49
5940-00-113-9824	1	80		1	72
5905-00-114-5388	15	22	6145-00-577-8452	8	37
5905-00-114-5407	14	31	5310-00-582-5677	1	56
5905-00-116-8569	14	24	5962-00-584-0623	14	2
	15	26	5310-00-595-6211	1	86
5905-00-118-4559	14	30		8	16
5905-00-126-6683	13	24	5310-00-595-6761	14	45
	14	29		15	50
5905-00-131-1255	14	22	5310-00-619-1148	1	52
5905-00-131-1256	15	29		7	3
5905-00-138-7558	15	32	5305-00-637-1125	8	34
5905-00-141-0598	13	17	5905-00-689-4716	13	16
5905-00-141-1130	15	20		14	14

## NATIONAL STOCK NUMBER AND PART NUMBER INDEX

## NATIONAL STOCK NUMBER INDEX

STOCK NUMBER	FIG.	ITEM	STOCK NUMBER	FIG.	ITEM
5935-00-702-4199	14	10	5310-00-929-6395	13	34
5305-00-702-4523	1	69		14	42
5310-00-722-5998	14	49		15	43
	15	44	5310-00-933-8118	1	87
5935-00-762-0312	14	9		8	30
5305-00-764-0064	3	8		15	46
5305-00-768-0336	1	85	5310-00-933-8120	1	51
5310-00-782-1349	4	3		2	25
5310-00-786-4599	4	30		5	2
5970-00-809-6849	2	16		7	2
5940-00-813-0698	4	6	5310-00-933-8121	1	57
	4	33	5310-00-934-9748	1	88
	8	33		4	1
	12	2		8	31
5905-00-829-0211	2	17	5310-00-934-9757	2	21
5305-00-837-8918	7	1		9	7
5961-00-853-2601	13	12	5310-00-934-9759	1	77
	15	18		4	11
5310-00-855-1102	1	45	5310-00-934-9760	2	31
	1	66		5	11
	10	5	5310-00-934-9761	2	29
5310-00-856-8119	2	15		4	8
5920-00-877-9348	3	12		5	9
5310-00-880-5978	1	79		6	6
	2	12		8	27
	2	19		13	35
	4	13		14	50
	5	3	5310-00-934-9763	8	22
	9	2	5310-00-934-9765	1	50
5961-00-902-1177	15	15	5310-00-934-9766	4	26
5305-00-912-4833	1	71	5305-00-935-2922	2	13
5305-00-912-4838	1	54	5905-00-935-8545	13	21
5305-00-922-6286	1	42	5310-00-938-2013	14	47
	6	5		15	52
	14-	48	5305-00-939-9189	2	24
	15	42		5	1
5305-00-925-4777	2	30	5305-00-939-9211	1	62
	3	1	5305-00-940-9491	2	36
	8	32		6	11
5305-00-925-4780	4	18		8	24
5306-00-926-1784	1	55	5305-00-941-3551	14	41
5310-00-928-2690	14	46		15	45
	15	51	5305-00-941-9437	8	29
5310-00-929-6395	1	43	5305-00-942-2168	5	5
	2	28	5305-00-942-2237	13	32
	3	3	5305-00-942-5121	1	59A
	4	9		1	73
	5	8	5305-00-942-8431	1	81
	6	4		9	3
	8	26	5305-00-943-5918	2	34

## NATIONAL STOCK NUMBER AND PART NUMBER INDEX

## NATIONAL STOCK NUMBER INDEX

STOCK NUMBER	FIG.	ITEM	STOCK NUMBER	FIG.	ITEM
5305-00-943-5918	4	20	5910-01-119-4297	15	8
5305-00-945-0502	14	44	5910-01-119-4302	15	11
	15	49	5910-01-119-4305	15	7
5305-00-947-2169	4	21	5950-01-148-6851	1	14
	8	35	5961-01-148-8413	14	21
5305-00-948-4038	2	33	5961-01-148-8504	8	6
	4	16	5905-01-149-5107	13	26
	6	9		14	18
5905-00-948-8582	2	14	5905-01-165-5204	8	23
5961-00-950-6577	14	5			
5961-00-951-8757	14	13			
	15	16			
5305-00-954-8152	4	5			
5310-00-955-6216	1	39			
5305-00-957-6265	1	60			
5305-00-959-2739	1	84			
5310-00-973-8660	1	44			
	2	27			
	3	2			
	4	10			
	5	6			
	6	3			
	8	25			
	13	33			
5940-00-983-6043	4	15			
5940-00-983-6066	6	8			
	13	31			
5305-00-984-7341	1	68			
	2	32			
5305-00-984-7356	2	35			
5305-00-984-7363	1	74			
	2	22			
5961-00-985-4900	15	3			
5325-01-010-3383	2	2			
5340-01-012-7600	9	6			
5905-01-020-4642	13	29			
	14	25			
4140-01-022-0625	3	9			
5961-01-023-3309	13	13			
	15	17			
5945-01-040-8958	15	13			
5962-01-043-8326	13	1			
	14	1			
5935-01-044-4310	1	75			
5910-01-084-2838	4	35			
	8	28			
5905-01-085-0728	14	23			
6130-01-101-6803	1	21			
6130-01-101-6804	1	20			
5930-01-118-4392	14	33			

## CROSS-REFERENCE INDEXES

FSCM	PART NUMBER	PART NUMBER INDEX STOCK NUMBER	FIG.	ITEM
80063	.19DIAX9.00LG		1	82
71400	ANL500		10	6
03538	A390C	5961-01-148-8504	8	6
28875	BS2107F-30	4140-01-022-0625	3	9
81349	CQR29A1MBC224K3M		8	38
81349	CQR29A1MB125J3P	5910-01-084-2838	4	35
			8	28
18677	E-301-7IN		2	3
18677	E-301-8.5IN		2	4
81349	FH22AM	5920-00-877-9348	3	12
81349	F03G3R00B		3	11
81349	JAN1N3020		13	6
81349	JAN1N3826A	5961-00-950-6577	14	5
81349	JAN1N4961	5961-00-427-0429	13	7
			14	4
81349	JAN1N4965	5961-00-227-9770	13	4
			15	4
81349	JAN1N4970	5961-00-452-1245	13	2
81349	JAN1N645	5961-00-087-6047	14	3
81349	JAN1N647	5961-00-985-4900	15	3
81349	JAN1N649	5961-00-064-2379	13	3
81349	JAN1N943B	5961-00-052-0666	13	5
81349	JAN2N1893	5961-00-853-2601	13	12
			15	18
81349	JAN2N2222A	5961-00-951-8757	14	13
			15	16
81349	JAN2N3019	5961-00-241-3456	13	11
81349	JAN4N24	5961-01-023-3309	13	13
			15	17
33809	LM109H/883B		15	2
12040	LM158H/883		15	1
81349	MSB301	6625-00-166-1005	2	11
96906	MS15795-802	5310-00-595-6761	14	45
			15	50
96906	MS15795-803	5310-00-595-6211	1	86
			8	16
96906	MS15795-804	5310-00-782-1349	4	3
96906	MS15795-805	5310-00-722-5998	14	49
			15	44
96906	MS15795-807	5310-00-880-5978	1	79
			2	12
			2	19
			4	13
			5	3
			9	2
96906	MS15795-810	5310-00-582-5677	1	56
96906	MS15795-905	5310-00-045-5203	8	19
96906	MS15795-908	5310-00-045-5207	4	7
96906	MS15795-910	5310-00-045-5210	1	47
			1	64
			10	2

## CROSS-REFERENCE INDEXES

FSCM	PART NUMBER	PART NUMBER INDEX STOCK NUMBER	FIG.	ITEM
96906	MS15795-912	5310-00-045-5212	4	32
96906	MS15795-914	5310-00-045-5214	4	23
96906	MS20659-107	5940-00-113-9824	1	80
96906	MS20659-138	5940-00-113-3136	14	37
			15	47
96906	MS21355-271	5930-01-118-4392	14	33
96906	MS25036-101	5940-00-813-0698	4	6
			4	33
			8	33
			12	2
96906	MS25036-106	5940-00-283-5280	8	20
			12	1
96906	MS25036-111	5940-00-204-8990	8	36
96906	MS25036-149		12	3
96906	MS25036-150	5940-00-113-8184	12	6
96906	MS25036-153		12	4
96906	MS25036-154	5940-00-230-0515	11	1
96906	MS25036-156	5940-00-143-4775	11	3
96906	MS25036-157	5940-00-143-4777	11	2
96906	MS3470L-1626S		4	17
96906	MS35190-234	5305-00-957-6265	1	60
96906	MS35190-253	5305-00-059-4568	9	1
96906	MS35191-234		1	59
96906	MS35191-237	5305-00-959-2739	1	84
96906	MS35191-239	5305-00-984-7356	2	35
96906	MS35191-254		2	18
96906	MS35191-272	5305-00-984-7363	1	74
			2	22
96906	MS35191-273	5305-00-984-7341	1	68
			2	32
96906	MS35214-27	5305-00-206-1288	8	18
96906	MS35214-29	5305-00-637-1125	8	34
96906	MS35215-59	5305-00-954-8152	4	5
96906	MS35274-64	5305-00-837-8918	7	1
96906	MS35275-205	5305-00-945-0502	14	44
			15	49
96906	MS35275-213	5305-00-941-3551	14	41
			15	45
96906	MS35275-215	5305-00-941-9437	8	29
96906	MS35275-217	5305-00-947-2169	4	21
			8	35
96906	MS35275-218	5305-00-925-4780	4	18
96906	MS35275-228	5305-00-922-6286	1	42
			6	5
			14	48
			15	42
96906	MS35275-230	5305-00-940-9491	2	36
			6	11
			8	24
96906	MS35275-231	5305-00-925-4777	2	30
			3	1



## CROSS-REFERENCE INDEXES

FSCM	PART NUMBER	PART NUMBER INDEX STOCK NUMBER	FIG.	ITEM
96906	MS35275-231	5305-00-925-4777	8	32
96906	MS35275-232	5305-00-948-4038	2	33
			4	16
			6	9
96906	MS35275-234	5305-00-942-2168	5	5
96906	MS35275-245	5305-00-942-8431	1	81
			9	3
96906	MS35275-249	5305-00-943-5918	2	34
			4	20
96906	MS35275-264	5305-00-939-9189	2	24
			5	1
96906	MS35275-267	5305-00-942-5121	1	59A
			1	73
96906	MS35275-270	5305-00-939-9211	1	62
96906	MS35276-208	5305-00-942-2237	13	32
96906	MS35276-263	5305-00-912-4838	1	54
96906	MS35276-265	5305-00-912-4833	1	71
96906	MS35307-305	5305-00-021-3616	1	70
96906	MS35307-306	5105-00-702-4523	1	69
96906	MS35307-308	5305-00-207-8253	1	67
96906	MS35309-306	5305-00-543-5828	1	63
96906	MS35309-308	5305-00-550-3934	4	34
96906	MS35309-310	5305-00-550-3935	1	49
			1	72
96906	MS35333-107	5310-00-019-0672	1	48
96906	MS35338-101	5310-00-184-8970	1	46
			1	65
			4	27
			10	4
96906	MS35338-102	5310-00-167-0671	4	31
96906	MS35338-103	5310-00-184-8971	4	24
96906	MS35338-134	5310-00-928-2690	14	46
			15	51
96906	MS35338-135	5310-00-933-8118	1	87
			8	30
			15	46
96906	MS35338-136	5310-00-929-6395	1	43
			2	28
			3	3
			4	9
			5	8
			6	4
			8	26
			13	34
			14	42
			15	43
96906	MS35338-137		1	78
			2	20
			4	12
			9	8
96906	MS35338-138	5310-00-933-8120	1	51

## CROSS-REFERENCE INDEXES

FSCM	PART NUMBER	PART NUMBER INDEX STOCK NUMBER	FIG.	ITEM
96906	MS35338-138	5310-00-933-8120		25
			5	2
			7	2
96906	MS35338-139	5310-00-933-8121	1	57
96906	MS35338-98	5310-00-184-8977	8	21
96906	MS35489		3	13
96906	MS35649		3	4
96906	MS35649-204	5310-00-934-9760	2	31
			5	11
96906	MS35649-224	5310-00-938-2013	14	47
			15	52
96906	MS35649-2254	5310-00-250-9477	1	58
96906	MS35649-2255	5310-00-855-1102	1	45
			1	66
			10	5
96906	MS35649-2315	5310-00-786-4599	4	30
96906	MS35649-2385	5310-00-056-3394	4	25
96906	MS35649-244	5310-00-934-9748	1	88
			4	1
			8	31
96906	MS35649-264	5310-00-934-9761	2	29
			4	8
			5	9
			6	6
			8	27
			13	35
			14	50
96906	MS35649-265	5310-00-934-9763	8	22
96906	MS35649-282	5310-00-934-9757	2	21
			9	7
96906	MS35649-284	5310-00-934-9759		77
			4	11
96906	MS35650-304	5310-00-934-9765	1	50
96906	MS35650-305	5310-00-934-9766	4	26
96906	MS51937-1	5306-00-926-1784	1	55
96906	MS51959-17	5305-00-768-0336	1	85
96906	MS51959-32	5305-00-764-0064	3	8
96906	MS75009-20	5305-00-935-2922	2	13
96906	MS75009-4	5970-00-809-6849	2	16
96906	MS75009-6	5310-00-856-8119	2	15
96906	MS75009-9	5905-00-948-8582	2	14
81349	M24066/2-031		15	40
81349	M24066/2-209		8	15
81349	M24066/2-228		4	4
			8	12
81349	M38510/10101BGA	5962-01-043-8326	13	1
			14	1
81349	M38510/10201BIA	5962-00-584-0623	14	2
81349	M39003-01-3021	5910-00-236-8745	15	9
81349	M39003/01-2286		15	10
81349	M39003/01-2596	5910-00-170-9793	15	5

## CROSS-REFERENCE INDEXES

FSCM	PART NUMBER	PART NUMBER INDEX STOCK NUMBER	FIG.	ITEM
81349	M39003/01-2994	5910-00-156-7293	13	9
81349	M39003/01-3021	5910-00-236-8745	13	8
81349	M39003/01-3061	5910-00-270-2447	15	6
81349	M39003/01-5038		14	7
81349	M39003/01-5630	5910-00-236-9885	14	6
81349	M39006/22-0517	5910-01-119-4305	15	7
81349	M39006/22-0557	5910-01-119-4297	15	8
81349	M39006/22-0571	5910-01-119-4302	15	11
81349	M39014/01-1529		14	8
81349	M39016-6-109M		14	11
			15	13
81349	M39016/6-109M		13	10
81349	M39018/03-0640		15	12
81349	M39024-10-02	5935-00-702-4199	14	10
81349	M39024-10-03	5935-00-762-0312	14	9
81349	M55302/57A44X		14	12
			15	14
81349	M55302/58H44X		12	5
49956	NB103	5310-00-955-6216	1	39
96906	PAD5338-135		4	2
81349	RCR07G102JS	5905-00-110-7620	13	23
			14	16
81349	RCR07G103JS	5905-00-106-3666	15	33
81349	RCR07G104JS	5905-00-110-0388	15	35
81349	RCR07G122JS	5905-00-131-1255	14	22
81349	RCR07G152JS	5905-00-106-1356	14	15
			15	36
81349	RCR07G222JS	5905-00-105-7764	15	34
81349	RCR07G224J		15	38
81349	RCR07G332JS	5905-00-126-6683	13	24
			14	29
81349	RCR07G333JS	5905-00-118-4559	14	30
81349	RCR07G474JS	5905-00-105-7767	15	30
81349	RCR07G563JS	5905-00-106-1357	14	19
81349	RCR20G101JS	5905-00-106-9344	15	21
81349	RCR20G102JS	5905-00-110-0196	13	18
			15	19
81349	RCR20G103JS		13	14
			15	25
81349	RCR20G152JS	5905-00-111-4738	13	27
			14	20
81349	RCR20G153JS	5905-00-106-1273	13	28
			15	23
81349	RCR20G183JS	5905-00-935-8545	13	21
81349	RCR20G220JS	5905-00-114-5388	15	22
81349	RCR20G222JS	5905-00-141-1168	13	20
81349	RCR20G271JS	5905-00-114-5407	14	31
81349	RCR20G272JS	5905-00-141-1130	15	20
81349	RCR20G332JS	5905-00-104-8348	13	30
81349	RCR20G333JS	5905-00-104-8330	15	37
81349	RCR20G472J		15	31

## CROSS-REFERENCE INDEXES

FSCM	PART NUMBER	PART NUMBER INDEX STOCK NUMBER	FIG.	ITEM
81349	RCR20G511JS	5905-00-104-8349	15	28
81349	RCR20G561JS	5905-00-141-0598	13	17
81349	RCR20G682JS	5905-00-141-1165	13	22
			14	17
81349	RCR20G821JS	5905-00-116-8569	14	24
			15	26
81349	RCR32G152JS	5905-00-106-1246	13	19
81349	RCR32G270JS	5905-00-456-0577	15	27
81349	RCR32G820JS	5905-00-131-1256	15	29
81349	RCR42G331JS	5905-00-689-4716	13	16
			14	14
81349	RCR42G510JS	5905-00-138-7558	15	32
81349	RCR42G621JS	5905-00-407-6167	13	15
81349	RJR26FX102P	5905-01-020-4642	13	29
			14	25
81349	RJR26FX502P	5905-01-085-0728	14	23
81349	RJ26CX103J		15	24
81349	RJ50CP202		14	27
81349	RLR07C2201GR		14	28
81349	RLRO7C8200GR		14	26
81349	RNC55H1802FM		14	32
81349	RWR74S3RO1FS	5905-01-165-5204	8	23
81349	RW37V150	5905-00-829-0211	2	17
80063	SM-A-743352-1		10	1
80063	SM-A-743352-2		4	29
80063	SM-A-817739-1		3	7
80063	SM-A-836508-1		8	4
80063	SM-A-836509-1		8	10
80063	SM-A-836510-1		8	5
80063	SM-A-836511-1		8	13
80063	SM-A-836513-1		8	3
80063	SM-B-416109-1	5310-00-973-8660	1	44
			2	27
			3	2
			4	10
			5	6
			6	3
			8	25
			13	33
80063	SM-B-817708		10	3
80063	SM-B-817716		1	12
80063	SM-B-817717		1	33
80063	SM-B-817718		1	32
80063	SM-B-817724		14	36
			15	38A
80063	SM-B-817737		3	14
80063	SM-B-817738		3	5
80063	SM-B-836452		8	8
80063	SM-B-836469		8	7
80063	SM-B-836470		8	2
80063	SM-B-836473		4	22

## CROSS-REFERENCE INDEXES

FSCM	PART NUMBER	PART NUMBER INDEX STOCK NUMBER	FIG.	ITEM
80063	SM-B-836474		2	10
80063	SM-B-836478		1	4
80063	SM-B-836486		6	10
80063	SM-B-836491		4	28
80063	SM-B-836495		8	14
80063	SM-B-836499		5	4
80063	SM-B-836524		1	53
80063	SM-B-836532		5	7
80063	SM-B-836533		2	26
80063	SM-B-836543		2	7
80063	SM-C-811945		1	8
80063	SM-C-811960-2		1	5
80063	SM-C-817697		14	40
80063	SM-C-817699		1	30
80063	SM-C-817700		1	25
80063	SM-C-817701		1	23
80063	SM-C-817704		2	9
80063	SM-C-817705		2	8
80063	SM-C-817706		6	1
80063	SM-C-817707		14	39
80063	SM-C-817715		1	17
80063	SM-C-817719		6	7
80063	SM-C-817721		9	4
80063	SM-C-817722		1	34
80063	SM-C-817726		1	15
80063	SM-C-817729		1	16
80063	SM-C-817734		1	2
80063	SM-C-836454		1	3
80063	SM-C-836468		5	10
80063	SM-C-836477-2		1	26
80063	SM-C-836494		7	4
80063	SM-C-836498		1	27
80063	SM-C-836527		1	38
80063	SM-C-836528		1	35
80063	SM-C-836529		1	37
80063	SM-C-836531		1	24
80063	SM-C-836541		13	36
80063	SM-D-817305-4		1	29
80063	SM-D-817695		15	41
80063	SM-D-817696		14	38
80063	SM-D-817698		1	9
80063	SM-D-817702	6130-01-101-6803	1	21
80063	SM-D-817703	6130-01-101-6804	1	20
80063	SM-D-817714		1	61
80063	SM-D-817720		1	28
80063	SM-D-817723		2	1
80063	SM-D-817725		1	19
80063	SM-D-836458		4	14
80063	SM-D-836459		3	6
80063	SM-D-836472		1	6
80063	SM-D-836475		1	36

## CROSS-REFERENCE INDEXES

FSCM	PART NUMBER	PART NUMBER INDEX STOCK NUMBER	FIG.	ITEM
80063	SM-D-836496		1	10
80063	SM-D-836500-2		1	18
80063	SM-D-836504		1	7
80063	SM-D-836506		1	1
80063	SM-D-836519		1	11
12867	T-0394	5950-01-148-6851	1	14
12867	T-0786		1	22
90201	VR-10		2	5
59950	06-1302-4488		1	31
06424	0770-9	5310-00-619-1148	1	52
			7	3
16845	1000-409-16	5961-01-148-8413	14	21
16845	1000-483-23	5905-01-149-5107	13	26
			14	18
92194	1231	6145-00-577-8452	8	37
06540	12750-B-1032-6		1	40
06540	12750B1032-6		7	6
05820	130-A		8	1
05820	130-2		8	11
88245	1432-9		8	17
51196	1616-A-4-21		14	43
			15	48
80131	2N2646	5961-00-902-1177	15	15
14655	26F6622FA		9	5
14655	30393-5	5340-01-012-7600	9	6
56289	36DX343G040CC2A		2	6
81349	37TB2	5940-00-983-6043	4	15
81349	40TB5S	5940-00-983-6066	6	8
			13	31
80063	440AP120ME2042A- 05296		6	2
97013	604-3MDG		4	19
12532	63502		8	9
92702	65-175		3	10
94222	82-11-280-16W/82 -32-101-20		1	76
94222	82-11-360-16W/82 -32-101-17		1	83
94222	82-16-260-16W/82 -32-101-17		14	35
			15	39
94222	82-35-307-55	5935-01-044-4310	1	75
94222	82-47-112-15	5325-01-010-3383	2	2
06540	8754-A-1032		1	13
			2	23
06540	8756-A-1032		1	41
			7	5

By Order of the Secretaries of the Army, the Navy and the Air Force:

Official:

JOHN A WICKHAM, JR.  
*General, United States Army*  
*Chief of Staff*

DONALD J. DELANDRO  
*Brigadier General, United States Army*  
*The Adjutant General*

G.B. SCHICK, JR.  
*Rear Admiral, United States Navy*  
*Commander, Naval Electronic*  
*Systems Command*

Official:

EARL T. O'LOUGHLIN  
*General, USAF, Commander, Air Force*  
*Logistics Command*

CHARLES A. GABRIEL  
*General, USAF*  
*Chief of Staff*

DISTRIBUTION:

To be distributed in accordance with DA Form 12-51 literature requirements for AN/TYC-39(V).

RECOMMENDED CHANGES TO EQUIPMENT TECHNICAL PUBLICATIONS



THEN...JOT DOWN THE DOPE ABOUT IT ON THIS FORM. CAREFULLY TEAR IT OUT, FOLD IT AND DROP IT IN THE MAIL.

SOMETHING WRONG WITH PUBLICATION

FROM: (PRINT YOUR UNIT'S COMPLETE ADDRESS)

DATE SENT

PUBLICATION NUMBER

PUBLICATION DATE

PUBLICATION TITLE

BE EXACT PIN-POINT WHERE IT IS

PAGE NO.

PARA-GRAPH

FIGURE NO.

TABLE NO.

IN THIS SPACE, TELL WHAT IS WRONG AND WHAT SHOULD BE DONE ABOUT IT.

TEAR ALONG PERFORATED LINE

PRINTED NAME, GRADE OR TITLE AND TELEPHONE NUMBER

SIGN HERE



PIN: 058454-000